



.050 MICROCHANNEL CARD EDGE CONNECTORS

CENTURY INTERCONNECT PRODUCTS

Distributed by Electro-Stock, Inc. sales@electrostock.com
630-682-1542 Fax 630-682-1562 http://www.electrostock.com

ORDERING INFORMATION

C2C - XXX - X

1 2 3

1...Series C2C .050 Microchannel card edge connectors

2...Number of Contacts

112, 120, 182

3...Contact Plating

S...Selective gold flash

SPECIFICATIONS

ELECTRICAL:

Current Rating: 1 amp

Dielectric Withstanding Voltage:

500V AC min. for one minute

Insulation Resistance:

1000 megohms min. at 500 VDC

Contact Resistance:

30 milliohms max. mated

Operating Temperature Range:

-55 degrees C to +105 degrees C

MECHANICAL:

Insulator Material: Plastic PPS
flammability UL94V-0

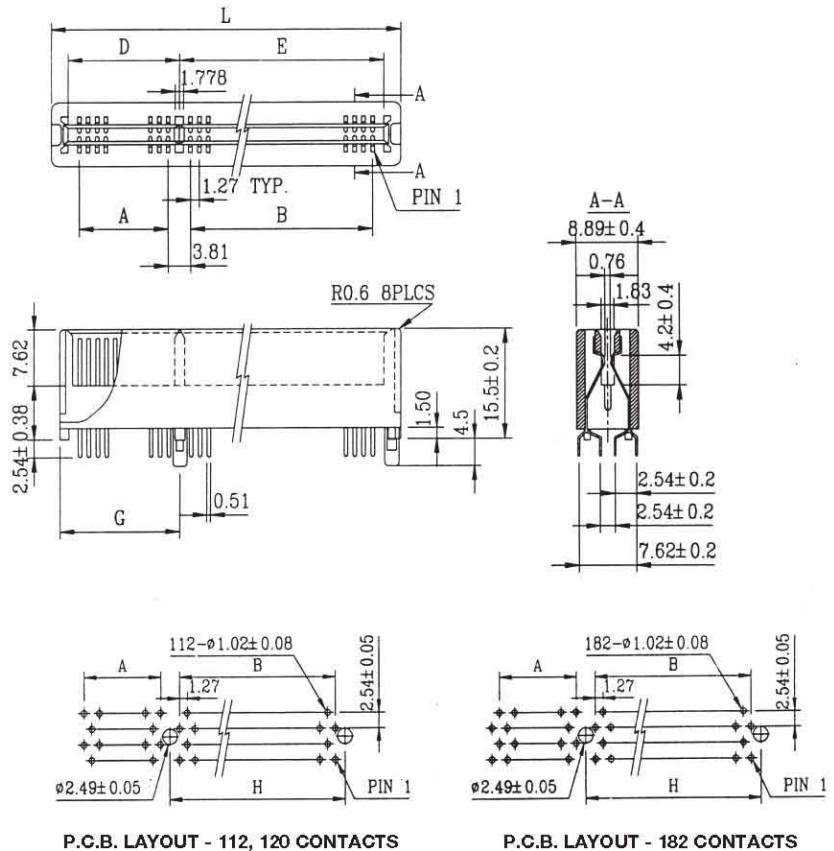
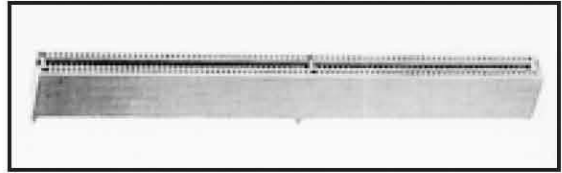
Contact Material: Phosphor bronze

Contact Finish: Gold over nickel

Soldertail Finish: Tin-lead over nickel

P.C.B. Insertion Force: 6.0 ounces max.
for each pair contact

P.C.B. Withdrawal Force: 1.0 ounce min.
for each pair contact



P.C.B. LAYOUT - 112, 120 CONTACTS

P.C.B. LAYOUT - 182 CONTACTS



UL FILE NUMBER: E164331

NO. OF CONTACTS	DIMENSIONS (mm)						
	A	B	D	E	G	H	L
112	12.70	55.88	15.88	59.06	18.29	59.69	79.76
120	12.70	60.96	15.88	64.14	18.29	64.77	84.84
182	52.07	60.96	55.25	64.14	57.66	64.77	124.21