



.050 CARD EDGE CONNECTORS

CENTURY INTERCONNECT PRODUCTS

Distributed by Electro-Stock, Inc. sales@electrostock.com
630-682-1542 Fax 630-682-1562 http://www.electrostock.com

ORDERING INFORMATION

C2C - XXX - X - X

1 2 3 4

1...Series C2C .050" card edge

2...Number of Contacts

10 to 120

3...Contact Plating

S...Selective gold flash

4...PCB Footprint Pattern

A...A Pattern

B...B Pattern

C...Straddle Option



SPECIFICATIONS

ELECTRICAL:

Current Rating: 1 amp

Dielectric Withstanding Voltage:

500V AC min. for one minute

Insulation Resistance:

1000 megohms min. at 500 VDC

Contact Resistance:

30 milliohms max. mated

Operating Temperature Range:

-55 degrees C to +105 degrees C

MECHANICAL:

Insulator Material: Plastic PPS
flammability UL94V-0

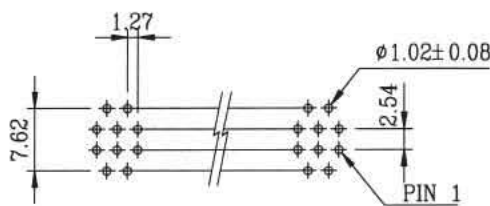
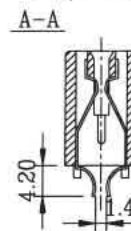
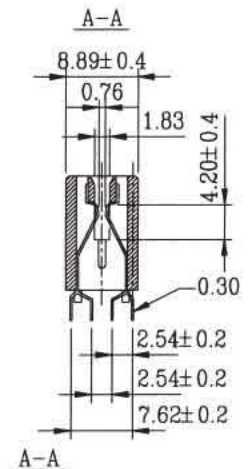
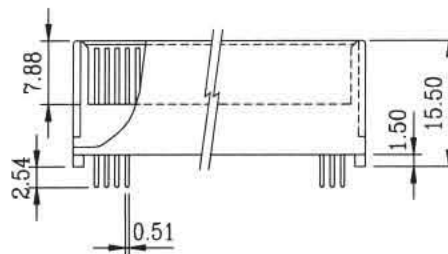
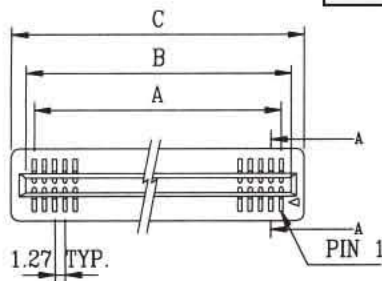
Contact Material: Phosphor bronze

Contact Finish: Gold over nickel

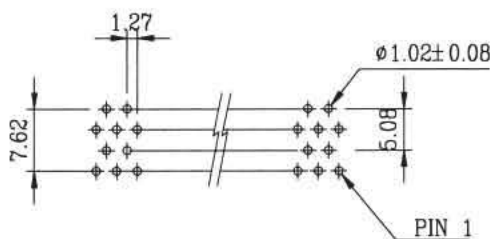
Soldertail Finish: Tin-lead over nickel

P.C.B. Insertion Force: 6.0 ounces max.
for each pair contact

P.C.B. Withdrawal Force: 1.0 ounce min.
for each pair contact



A TYPE PATTERN



B TYPE PATTERN

NO. OF CONTACTS	DIMENSIONS (mm)		
	A±0.10	B±0.10	C±0.38
10	5.08	7.62	10.08
12	6.35	8.89	12.07
20	11.43	13.97	17.15
30	17.78	20.32	23.50
40	24.13	26.67	29.85
50	30.48	33.02	36.20
60	36.83	39.37	42.55
80	49.53	52.07	55.25
100	62.23	64.77	67.95
120	74.77	77.47	80.65