



SIMM SOCKETS, VERTICAL MOUNT

SINGLE AND DUAL ROW, 72 AND 144 POSITIONS

CENTURY INTERCONNECT PRODUCTS

Distributed by Electro-Stock, Inc. sales@electrostock.com
630-682-1542 Fax 630-682-1562 http://www.electrostock.com

SPECIFICATIONS

ELECTRICAL:

Current Rating: 1 amp

Contact Resistance: 30 milliohms max.

Insulation Resistance: 1000 megohms min. at 500V DC

Operating Temperature Range: -55 degrees C
to +105 degrees C

Capacitance: 1 pf. max.

MECHANICAL:

Contact Material: Phosphor bronze

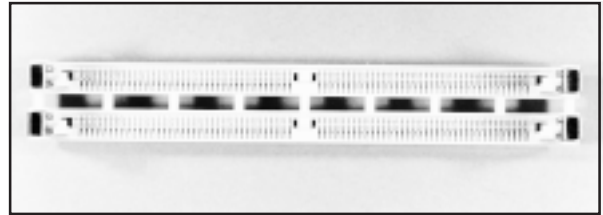
Contact Plating: Tin over nickel

Insulator Material: LCP, glass-filled,
self-extinguishing

Flammability Rating: UL94V-0

Durability: 25 cycles

Contact Force: 200 gr. min.



ORDERING INFORMATION

CSM72 - X - T - P

1 2 3 4

1...Series CSM72 SIMM sockets
with metal latches

2...Profile Type

A...Vertical mount, single row

E...Vertical mount, dual row

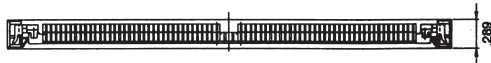
3...Contact Finish

T...Tin

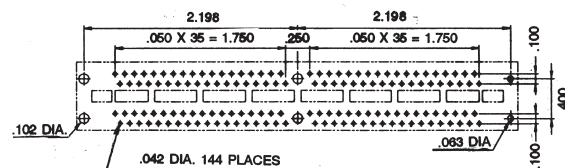
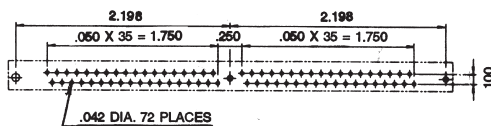
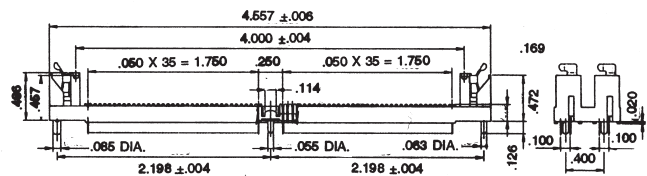
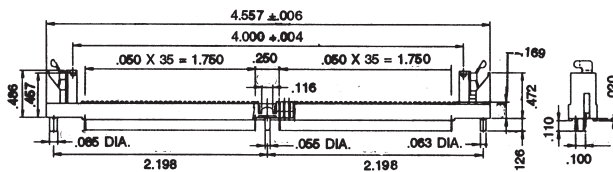
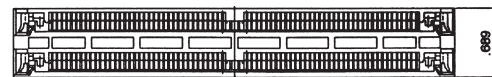
4...Center Post

P...With center post

SINGLE ROW



DUAL ROW



PCB LAYOUT

PCB LAYOUT