

MATERIAL AND FINISH

Insulator: Nylon, color black, UL 94V-0 rated  
Positive contact: See Table 1  
Negative contact: Brass, Nickel plated

ELECTRICAL SPECIFICATIONS

Voltage & current rating: 3 VDC, 120 mA  
Inter contact resistance: 100 mohm max. at both the positive and negative terminals when measured between the terminals of the PDI-2032 at 1 KHz with low drainage (100mA max.)  
Insulation resistance: 100 Mohm min. with 500 VDC applied between the positive and negative terminals.  
Dielectric withstanding voltage: 500 VDC applied for one minute between the positive and negative terminals.

MECHANICAL SPECIFICATIONS

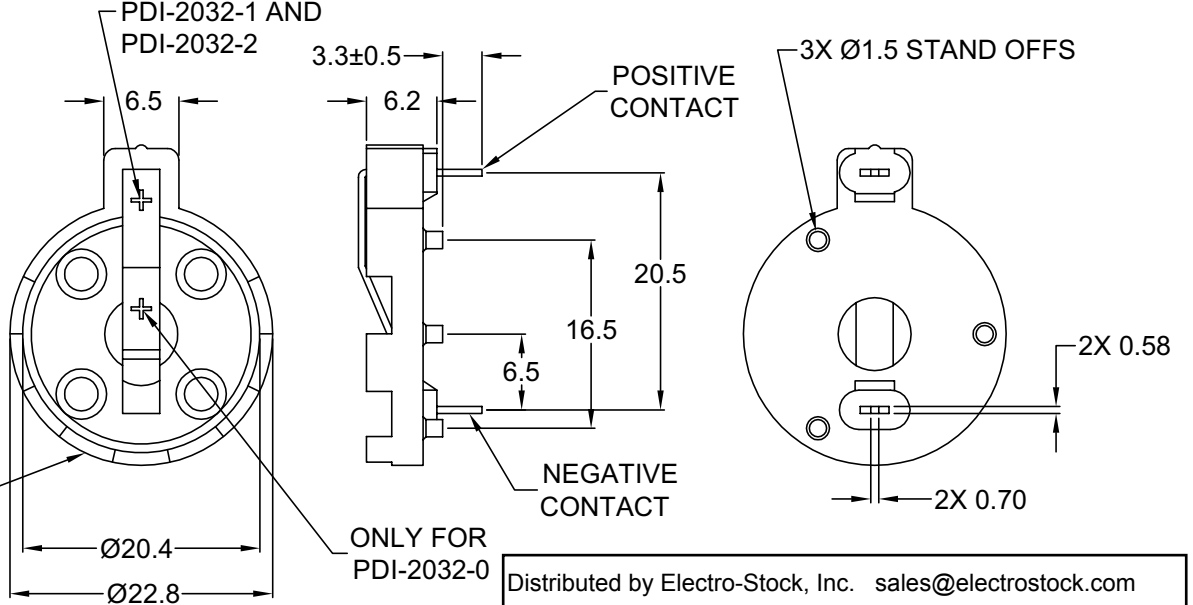
Battery insertion force: 0.3kg-1.0kg for the initial battery insertion  
Spring pressure: 50g min. initial contact force at positive and negative terminals  
Terminal strength: Electrical and mechanical performance specifications should still be satisfied without terminal cracking or excessive play, with a static load of 1kg applied to the terminals in any direction; however, the terminals may bend.

NOTES:

(1) 2032 size battery fits loosely into MPD socket P/N BH906 with 3mm (.118") diametrical clearance.

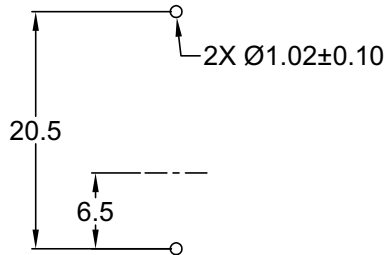
PART NUMBER	GE SANYO VARTA	UNION CARBIDE (EVEREADY)	PANASONIC RAYOVAC	SAFT	DURACELL
PDI-2032-0	CR 2032	CR 2032	BR 2032 CR 2032		DL 2032
PDI-2032-1	CR 2025	CR 2025	CR 2025		DL 2025
PDI-2032-2	CR 2016	CR 2016	BR 2016 BR 2020 CR 2016	LM 2020	DL 2016

ONLY FOR PDI-2032-1 AND PDI-2032-2



Distributed by Electro-Stock, Inc. sales@electrostock.com  
630-682-1542 Fax 630-682-1562 http://www.electrostock.com

PDI PART NUMBER	NOMINAL BATTERY SIZE	MEMORY PROTECTION DEVICES(MPD)	SAFT	KEystone	S.E.I.
PDI-2032-0	(2032) 20.0 x 3.2	BH 906 <sup>(1)</sup>	N/A	106	2S2032-0



RECOMMENDED PCB LAYOUT TOP VIEW

PART NUMBER	POSITIVE CONTACT MATERIAL	PLATING
PDI-2032-0	BERYLLIUM COPPER	NICKEL
PDI-2032-1	PHOSPHOR BRONZE	NICKEL
PDI-2032-2	BERYLLIUM COPPER	NICKEL

TOLERANCE UNLESS OTHERWISE SPECIFIED		
X	±	1
X.X	±	0.4
X.XX	±	0.20
DRAWN BY	GQ	DATE: 03/20/02
CHECK BY	TD	DATE: 05/08/02
APPR BY	PB	DATE: 05/08/02

**Power Dynamics, Inc.**  
Phone: 973 560-0019 Whippany, New Jersey Fax: 973 560-0076

PART: COIN CELL  
BATTERY HOLDER

<b>PDI-2032-X</b>		SHEET 1 of 1
PART #:	SIZE: A	ALL DIMENSIONS FOR REFERENCE ONLY DIMENSIONS ARE IN MILLIMETERS
SCALE: NTS	REV:	

REVISIONS	CHANGE	CHKG	CHKD	APPR
REV	DATE			

6

5

4

3

2

1

## MATERIAL AND FINISH

Insulator: Glass filled thermoplastic, color black,  
UL 94V-0 rated

Positive contact: Beryllium Copper, 50 $\mu$ " Nickel plated  
all over

Negative contact: Brass, 50 $\mu$ " Nickel plated all over

## ELECTRICAL SPECIFICATIONS

Voltage rating: 3 VDC

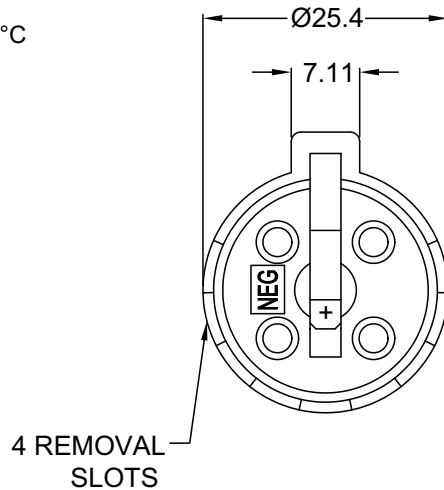
## ENVIRONMENTAL

Operating temperature: -55°C to +125°C

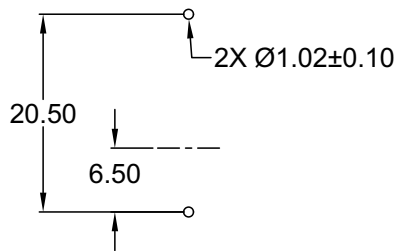
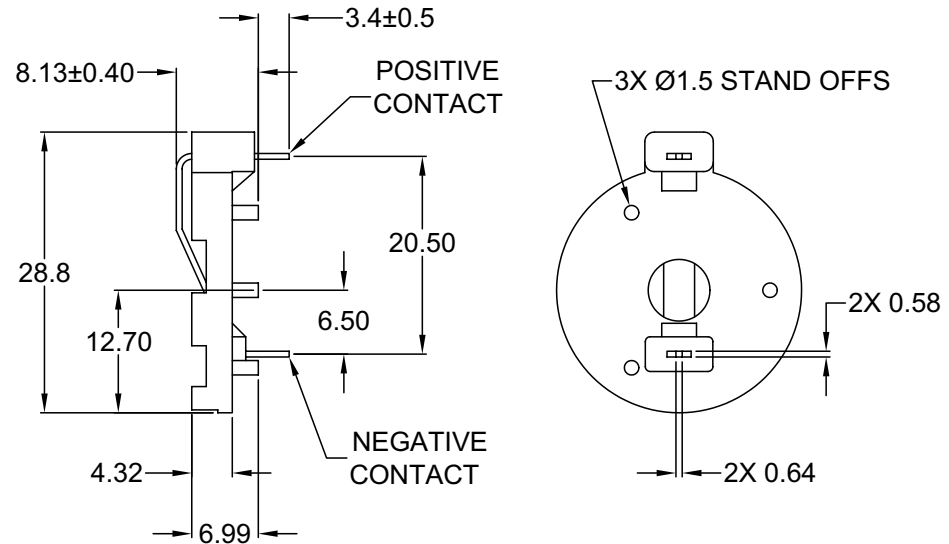
## NOTES:

(1) 2325 size battery fits loosely into  
Saft socket P/N HLD2425 with 2mm  
(.079") diametrical clearance.

(2) 2325 size battery fits loosely into  
Keystone socket P/N 105 with  
1.7mm(.067") diametrical clearance.



PART NUMBER	GE SANYO VARTA	UNION CARBIDE (EVEREADY)	PANASONIC RAYOVAC	SAFT	DURACELL
PDI-2325-0			BR 2325		
PDI-2325-1	CR 2316		BR 2320		



RECOMMENDED  
PCB LAYOUT  
TOP VIEW

Distributed by Electro-Stock, Inc. sales@electrostock.com  
630-682-1542 Fax 630-682-1562 http://www.electrostock.com

TABLE 1: CROSS REFERENCE CHART

PDI PART NUMBER	NOMINAL BATTERY SIZE	MEMORY PROTECTION DEVICES(MPD)	SAFT	KEYSTONE	S.E.I.
PDI-2325-0	(2325) 23.0 x 2.5	BH 906	HLD2425 <sup>(1)</sup>	105 <sup>(2)</sup>	2S2325-0

TOLERANCE  
UNLESS OTHERWISE SPECIFIED

X ± 1  
X.X ± 0.4  
X.XX ± 0.20

**Power Dynamics, Inc.**

Phone: 973 560-0019 Whippany, New Jersey Fax: 973 560-0076

PART: BATTERY HOLDER  
COIN CELL

DRAWN BY: GQ DATE: 03/21/02  
CHECK BY: TD DATE: 03/22/02  
APPR BY: PB DATE: 03/22/02

PDI-2325-X

SHEET  
1 of 1

PART #: PDI-2325-X  
SIZE: A ALL DIMENSIONS FOR REFERENCE ONLY  
SCALE: NTS DIMENSIONS ARE IN MILLIMETERS

REV:

6

5

4

3

2

1

REVISIONS  
CHANGE  
CHKG CHECK APPR  
REV DATE

MATERIAL AND FINISH

Insulator: Nylon 66, color black, UL 94V-0 rated  
Positive contact: Beryllium Copper, Nickel plated  
Negative contact: Brass, Nickel plated

ELECTRICAL SPECIFICATIONS

Voltage & current rating: 3 VDC, 120 mA  
Inter contact resistance: 100 mohm max. at both the positive and negative terminals when measured between the terminals of the PDI-2425 at 1 KHz with low drainage (100mA max.)  
Insulation resistance: 100 Mohm min. with 500 VDC applied between the positive and negative terminals.  
Dielectric withstanding voltage: 500 VDC applied for one minute between the positive and negative terminals.

MECHANICAL SPECIFICATIONS

Battery insertion force: 0.3kg-1.0kg for the initial battery insertion  
Spring pressure: 50g min. initial contact force at positive and negative terminals  
Terminal strength: Electrical and mechanical performance specifications should still be satisfied without terminal cracking or excessive play, with a static load of 1kg applied to the terminals in any direction; however, the terminals may bend.

TABLE 2: BATTERY HOLDER SELECTION GUIDE

PART NUMBER	GE SANYO VARTA	UNION CARBIDE (EVEREADY)	PANASONIC RAYOVAC	SAFT LM 2425	DURACELL DL 2430
PDI-2425-0	CR 2430				
PDI-2425-1	CR 2420				DL 2420

Distributed by Electro-Stock, Inc. sales@electrostock.com  
630-682-1542 Fax 630-682-1562 http://www.electrostock.com

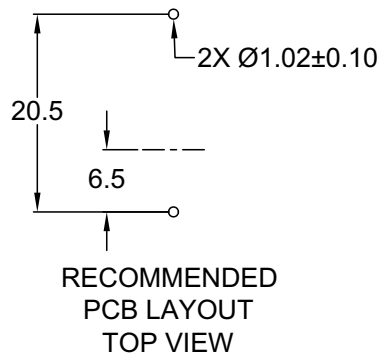
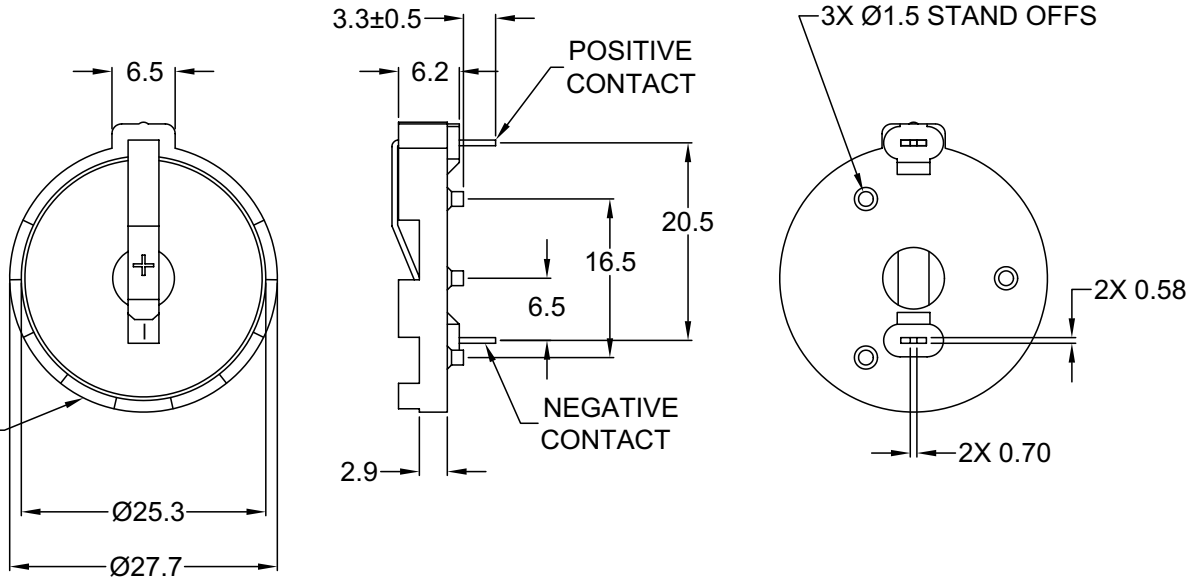


TABLE 1: CROSS REFERENCE CHART

PDI PART NUMBER	NOMINAL BATTERY SIZE	MEMORY PROTECTION DEVICES(MPD)	SAFT	KEYSTONE	S.E.I.
PDI-2425-0	(2425) 24.0/25.0 x 2.5/3.0	BH 1000	HLD2425	105	2S2425-0

TOLERANCE UNLESS OTHERWISE SPECIFIED  
X ± 1  
X.X ± 0.4  
X.XX ± 0.20

**Power Dynamics, Inc.**  
Phone: 973 560-0019 Whippany, New Jersey Fax: 973 560-0076

PART: COIN CELL  
BATTERY HOLDER

DRAWN BY	GQ	DATE:	03/22/02
CHECK BY	TD	DATE:	05/08/02
APPR BY	PB	DATE:	05/08/02

PART #: PDI-2425-X		SHEET 1 of 1
SIZE: A	ALL DIMENSIONS FOR REFERENCE ONLY	
SCALE: NTS	DIMENSIONS ARE IN MILLIMETERS	
		REV:

REVISIONS	CHANGE	CHKG	CHK	APPR
REV	DATE			