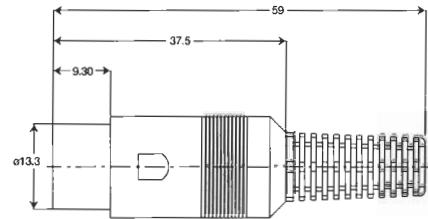
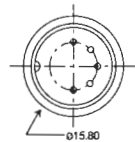


DIN Plugs

DP-015
(shown)



Rated Current: 1A
Rated Voltage: 12 VDC
Insulator Resistance: 50 Megaohm min. @ 250 VDC
Dielectric Withstanding Strength: 250 VAC for 1 minute
Housing Material: Nylon UL 94V-0

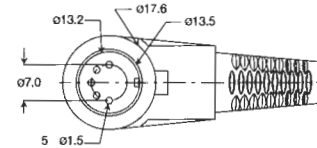
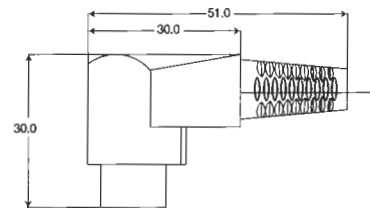


CONTACT ARRANGEMENTS						
PART NO.	DP-013	DP-014	DP-015 180°	DP-016	DP-017	DP-018 270°

DP-045
(shown)



Rated Current: 1A
Rated Voltage: 12 VDC
Insulator Resistance: 100 Megaohm min. @ 250 VDC
Dielectric Withstanding Strength: 250 VAC for 1 minute
Housing Material: Nylon UL 94V-0

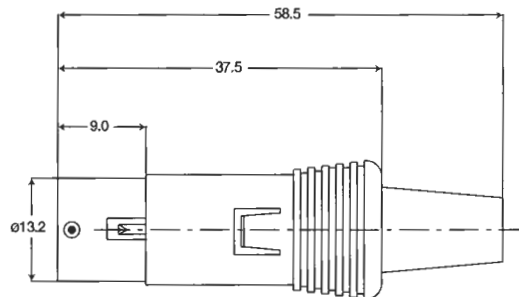
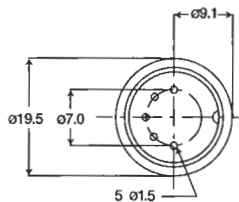


CONTACT ARRANGEMENTS						
PART NO.	DP-043	DP-044	DP-045	DP-046	DP-047	DP-048

DP-025



Rated Current: 1A
Rated Voltage: 12 VDC
Insulator Resistance: 50 Megaohm min. @ 250 VDC
Dielectric Withstanding Strength: 250 VAC for 1 minute
Housing Material: Nylon UL 94V-0



Specifications subject to change without notice. Dimensions in mm.
 Custom cables also available. See page 290.

Distributed by Electro-Stock, Inc. sales@electrostock.com
 630-682-1542 Fax 630-682-1562 http://www.electrostock.com

PDI
Power Dynamics, Inc.