

6

5

4

3

2

1

MATERIAL AND FINISH

Insulator: PC (Polycarbonate), color black,
 UL-94V-0 rated
 Contacts: Brass, Tin plated

ELECTRICAL SPECIFICATIONS:

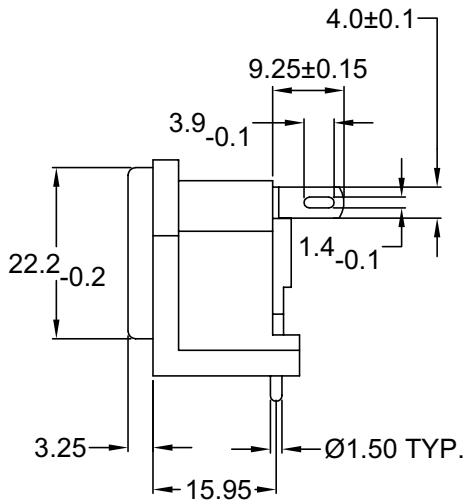
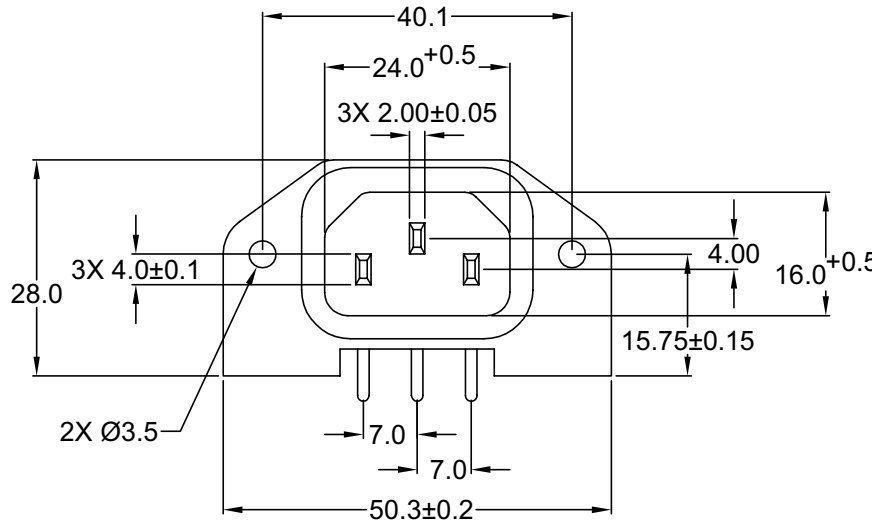
Current rating: 10 A

Voltage rating: 250 VAC

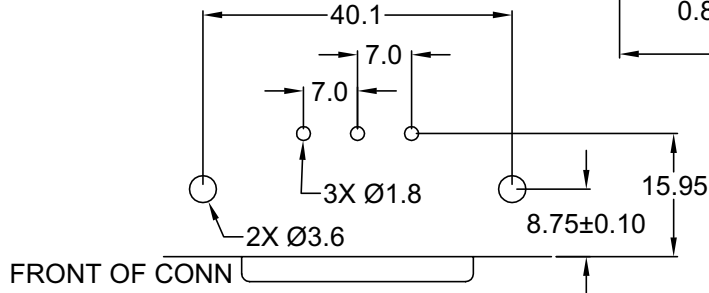
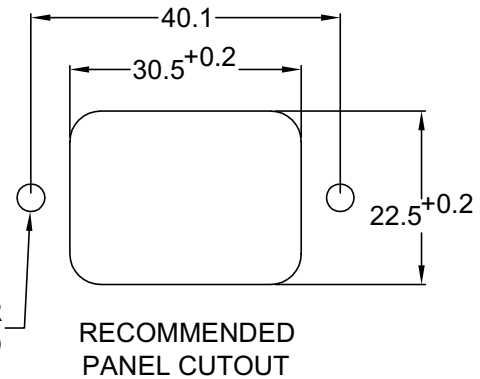
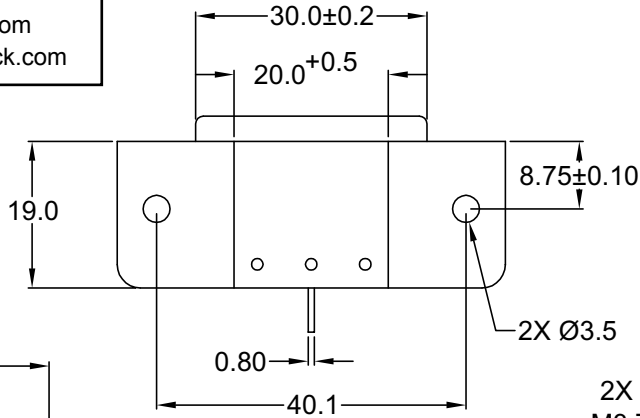


Current rating: 15 A

Voltage rating: 250 VAC



Distributed by Electro-Stock, Inc. sales@electrostock.com
 630-682-1542 Fax 630-682-1562 http://www.electrostock.com



RECOMMENDED
PCB LAYOUT (TOP VIEW)

2X Ø3.6 OR
M3 TRHEAD

REV	DATE	CHANGE	CHNG CHECK APPR			
			CE	SS	GD	PB
A5-B6	6/95	BODY MODIF.	CE	SS	GD	PB
A5-B6	11/5	ADDED PANEL CUTOUT	CE	SS	GD	PB
C	11/19/01	REVISED / UPDATED	CE	SS	GD	PB

TOLERANCE UNLESS OTHERWISE SPECIFIED	
X	± 1
X.X	± 0.4
X.XX	± 0.20

DRAWN BY	CE	DATE:	12/10/97
CHECK BY	AH	DATE:	11/5/98
APPR BY	SS	DATE:	11/5/98

Power Dynamics, Inc.

Phone: 973 560-0019 Whippany, New Jersey Fax: 973 560-0076

PART: IEC 60320 C14 APPL. INLET; PCB TERMINALS
15.95mm FOOTPRINT, SIDE FLANGE

PART #: 42R65-1111		SHEET 1 of 1
SIZE: A	ALL DIMENSIONS FOR REFERENCE ONLY DIMENSIONS ARE IN MILLIMETERS	
SCALE: NTS	REV: C	

6

5

4

3

2

1