

6

5

4

3

2

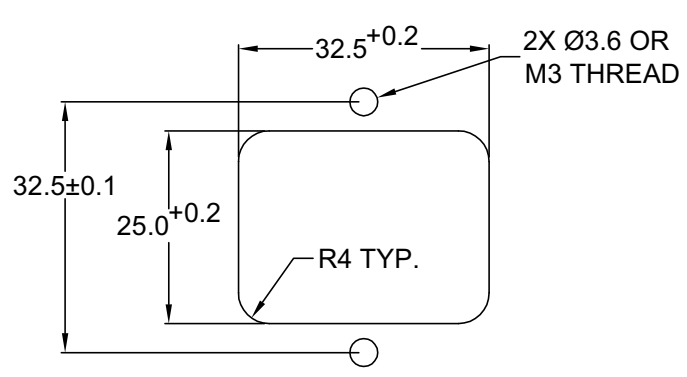
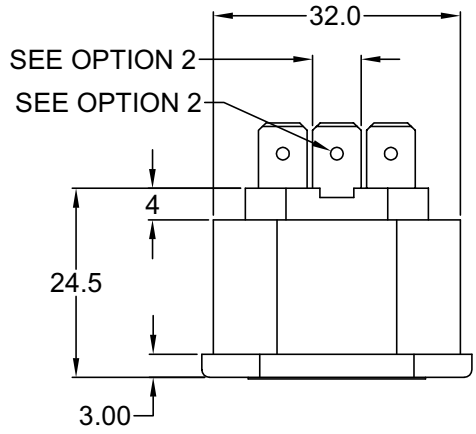
1

MATERIAL AND FINISH

Insulator: Polycarbonate, UL-94V-0 rated
Contacts: Brass

ELECTRICAL SPECIFICATIONS:

Current rating: 10 A/15 A
Voltage rating: 250 VAC
Insulation resistance: 100 Mohm min. at 500 VDC
Dielectric withstanding voltage: 2000 VAC for one minute



RECOMMENDED PANEL CUTOUT

ORDERING CODE:

43R03-2

1	2	3
---	---	---

1) COLOR

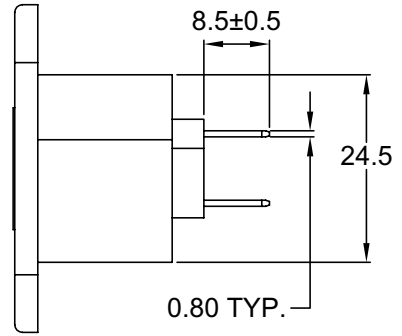
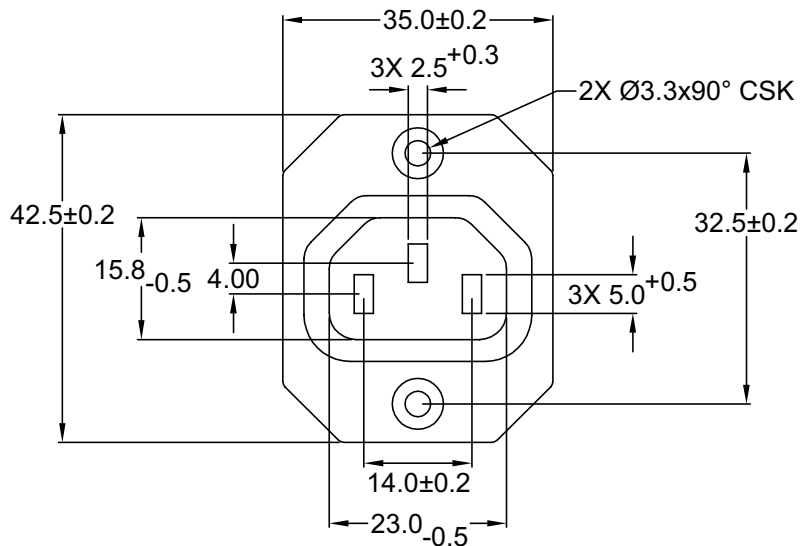
- 1 = BLACK
- 2 = GRAY

2) TERMINAL OPTIONS

- 1 = .187(4.8) WITH Ø1.4
- 2 = .250(6.3) WITH Ø1.65

3) ELECTRICAL CIRCUIT CONFIGURATION

- 1 = 10A 250V 70°C [IEC symbols]
- 15A 250V 70°C [UL symbols]
- 2 = 10A 250V 120°C [IEC symbols]
- 15A 250V 120°C [UL symbols]
- 2+GROUND [Terminal diagrams]



REVISIONS	CHNG	CHECK	APPR
	REV	DATE	

Distributed by Electro-Stock, Inc. sales@electrostock.com
630-682-1542 Fax 630-682-1562 http://www.electrostock.com

TOLERANCE UNLESS OTHERWISE SPECIFIED			
X	± 1		
X.X	± 0.4		
X.XX	± 0.20		
DRAWN BY	GQ	DATE:	10/05/01
CHECK BY	TD	DATE:	10/10/01
APPR BY	PB	DATE:	10/10/01

Power Dynamics, Inc.
Phone: 973 560-0019 Whippany, New Jersey Fax: 973 560-0076

PART: 10A/15A IEC 60320 APPL. OUTLET; QC
TERMINALS; CROSS FLANGE, PANEL MOUNT

PART #: 43R03-2XXX		SHEET 1 of 1
SIZE: A	ALL DIMENSIONS FOR REFERENCE ONLY DIMENSIONS ARE IN MILLIMETERS	REV:
SCALE: NTS		

6

5

4

3

2

1