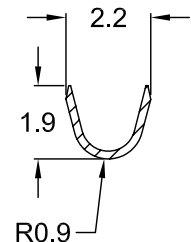
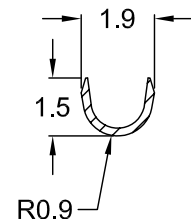
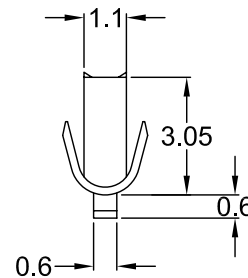
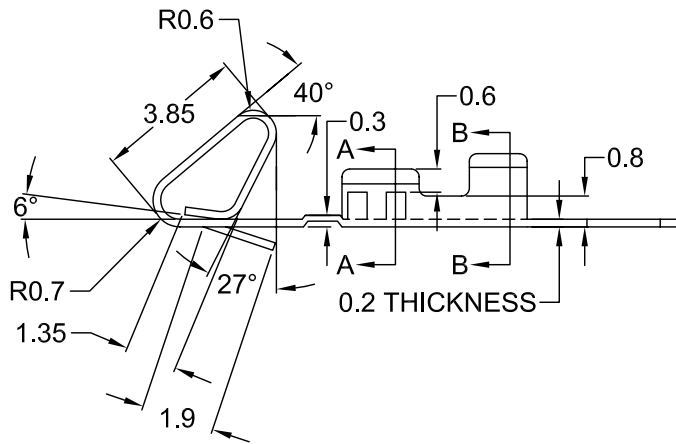
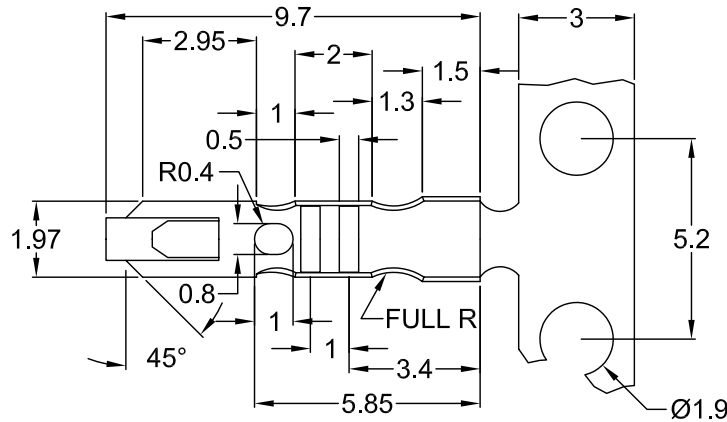


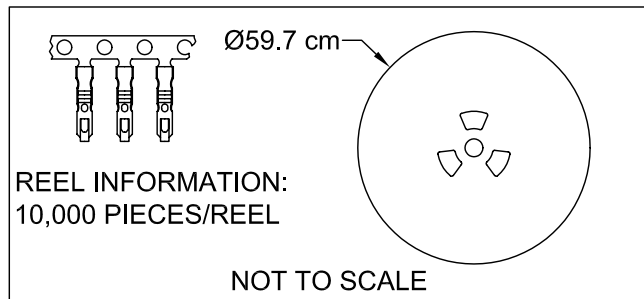
MATERIAL AND FINISH
 Contacts: Brass, 70µin Tin over Nickel, Hardness:SH

ELECTRICAL SPECIFICATIONS:
 Rated current: 3A, AC/DC
 Rated voltage: 250V AC/DC
 Contact resistance: 10 mohm min.



SECTION A-A

SECTION B-B



NOTE:
 ACCEPTS 22AWG TO 30AWG WIRE.
 FOR USE WITH PART# TCC-0XX.

Distributed by Electro-Stock, Inc. sales@electrostock.com
 630-682-1542 Fax 630-682-1562 http://www.electrostock.com

REV	DATE	1/22/02	CHNG	CHECK	APPR
	CHANGE		PB	TD	PB
	UPDATED	DRAWING			
	A				

TOLERANCE UNLESS OTHERWISE SPECIFIED			
X	± 1		
X.X	± 0.4		
X.XX	± 0.20		
DRAWN BY	TD	DATE:	1/6/99
CHECK BY	AH	DATE:	1/6/99
APPR BY	SS	DATE:	1/6/99

Power Dynamics, Inc.
 Phone: 973 560-0019 Whippany, New Jersey Fax: 973 560-0076

PART: POWER PIN CRIMP TERMINAL
 2.54mm PITCH; FOR TCC-0XX

TCC-REEL

ALL DIMENSIONS FOR REFERENCE ONLY
 DIMENSIONS ARE IN MILLIMETERS

SHEET 1 of 1
 REV: A