

6

5

4

3

2

1

MATERIAL AND FINISH

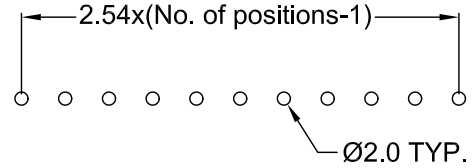
Insulator: Nylon 66, UL-94V-0 rated
Contacts: Brass, Tin over Nickel plated

ELECTRICAL SPECIFICATIONS:

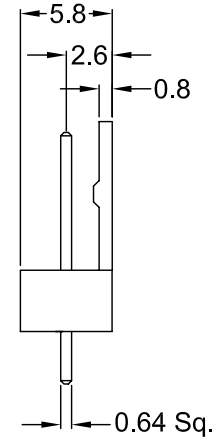
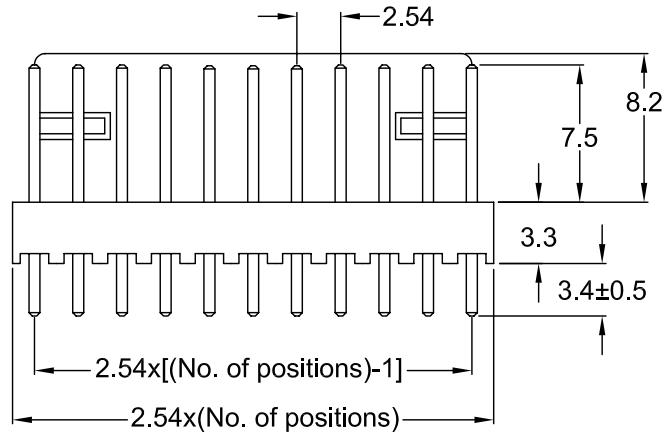
Rated current: 1A @ 250VAC
Insulation resistance: 1000 Mohm min. at 500VDC
Dielectric withstanding voltage: 1000VAC for one minute

ENVIRONMENTAL:

Operating Temperature: -55°C TO +105°C



RECOMMENDED PCB LAYOUT



REV		DATE		CHANGE		CHNG		CHK		APPR	
A	B	1/27/01	5/22/02	REVISED & UPDATED	REVD RECM'D PCB DIM	TD	TD	TD	PB	TD	PB

REVISIONS

TOLERANCE UNLESS OTHERWISE SPECIFIED		
X	±	1
X.X	±	0.4
X.XX	±	0.20

DRAWN BY	TD	DATE:	2/19/99
CHECK BY	TD	DATE:	2/19/99
APPR BY	SS	DATE:	2/25/99

Power Dynamics, Inc.
Phone: 973 560-0019 Whippany, New Jersey Fax: 973 560-0076

PART: FRICTION LOCK HEADER; 2.54mm PITCH
2~20 PINS; VERTICAL PCB MOUNT

TCP-0XX

PART #: _____

SIZE: A

SCALE: NTS

ALL DIMENSIONS FOR REFERENCE ONLY
DIMENSIONS ARE IN MILLIMETERS

SHEET 1 of 1

REV: B

6

5

4

3

2

1

6

5

4

3

2

1

MATERIAL AND FINISH

Insulator: Nylon 66 UL-94V-0
Contacts: Brass Tin plating

ELECTRICAL SPECIFICATIONS:

Current rating: 1 A
Voltage rating: 250 VAC
Insulation resistance: 1000 Megaohm min. at 500 VDC
Dielectric withstanding voltage: 1000 VAC rms for 1 minute.

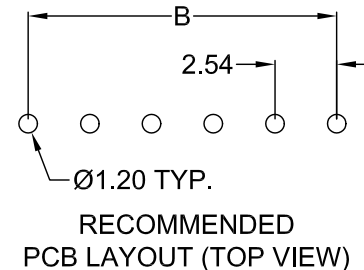
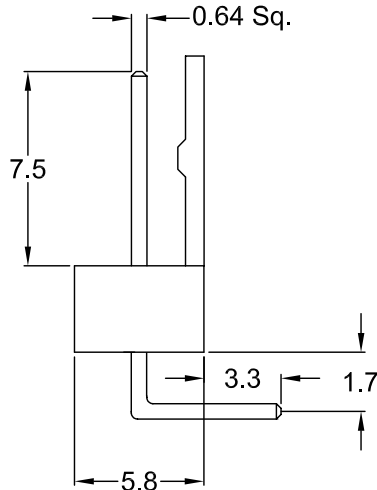
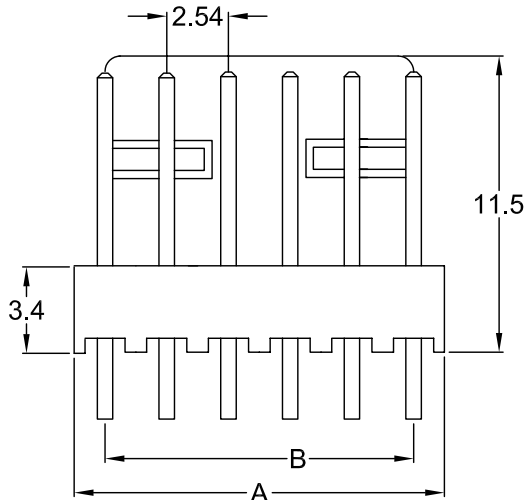
ENVIRONMENTAL:

Temperature: -55°C TO 105°C

NOTES:

Replace XX in P/N with number of positions.

POSITION	A	B	POSITION	A	B
2	5.08	2.54	12	30.48	27.94
3	7.62	5.08	13	33.02	30.48
4	10.16	7.62	14	35.56	33.02
5	12.70	10.16	15	38.10	35.56
6	15.24	12.70	16	40.64	38.10
7	17.78	15.24	17	43.18	40.64
8	20.32	17.78	18	45.72	43.18
9	22.86	20.32	19	48.26	45.72
10	25.40	22.86	20	50.80	48.26
11	27.94	25.40			



REVISIONS	CHNG	CHK	APPR
	DATE	REV'D & UPDATED	PB
	8/29/01		
	A		

TOLERANCE UNLESS OTHERWISE SPECIFIED		
X	±	1
X.X	±	0.4
X.XX	±	0.20
DRAWN BY	TD	DATE: 10/26/99
CHECK BY	JJ	DATE: 10/27/99
APPR BY	SS	DATE: 10/26/99

Power Dynamics, Inc.

Phone: 973 560-0019 Whippany, New Jersey Fax: 973 560-0076

PART: RIGHT ANGLE; 2 THRU 20 POSITIONS
2.54mm PITCH HEADER

PART #: TRP-0XX		SHEET 1 of 1
SIZE: A	ALL DIMENSIONS FOR REFERENCE ONLY DIMENSIONS ARE IN MILLIMETERS	REV: A
SCALE: NTS		

6

5

4

3

2

1