

6

5

4

3

2

1

MATERIAL AND FINISH

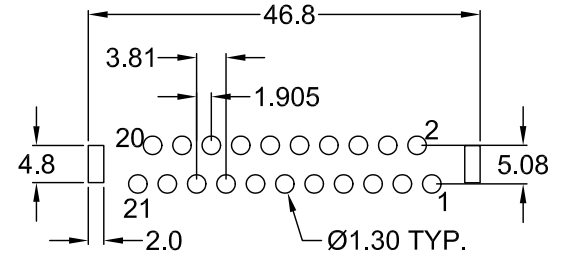
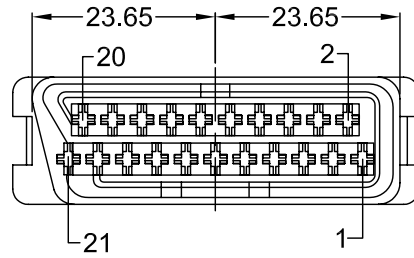
Insulator: PC, UL 94V-2 rated, color black
Contact: Brass, Tin (10%Pb 90% Sn) plated

MECHANICAL SPECIFICATIONS:

Insertion force: 11kg max.
Withdrawal force: 1.1 - 7kg.

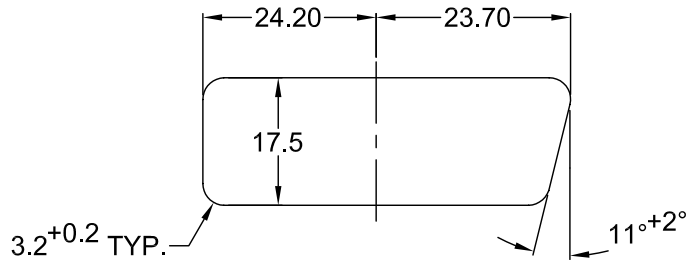
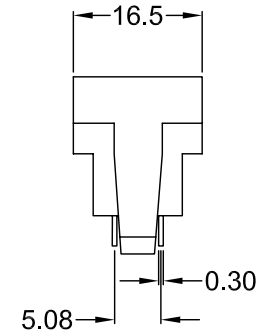
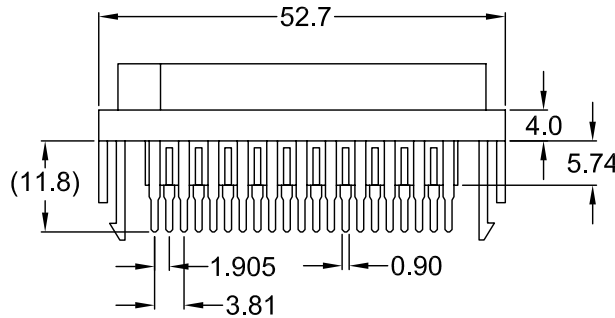
ELECTRICAL SPECIFICATIONS:

Dielectric withstanding voltage: 800 VAC for 1 minute
Insulation resistance: 1000 Mohm min. @ 500 VDC
Contact resistance: 20 mohm max.



RECOMMENDED PCB LAYOUT (TOP VIEW)

Distributed by Electro-Stock, Inc. sales@electrostock.com
630-682-1542 Fax 630-682-1562 http://www.electrostock.com



RECOMMENDED PANEL CUT OUT

REV	DATE	CHNG	CHK	APPR
	A	8/14/03	TD	PB
REVISIONS		CHANGE	REVISED	

TOLERANCE UNLESS OTHERWISE SPECIFIED	
X	± 1
X.X	± 0.4
X.XX	± 0.20
DRAWN BY	SS
CHECK BY	
APPR BY	
DATE:	8/31/94

Power Dynamics, Inc.
 Phone: 973 560-0019 Whippany, New Jersey Fax: 973 560-0076
 PART: 21 POSITION, SCART SOCKET
 VERTICAL PCB MOUNT

PART #: EI-024		SHEET 1 of 1
SIZE: A	ALL DIMENSIONS FOR REFERENCE ONLY DIMENSIONS ARE IN MILLIMETERS	
SCALE: NTS	REV: A	

6

5

4

3

2

1