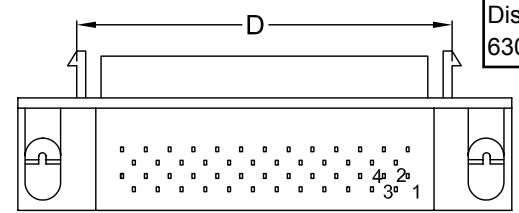
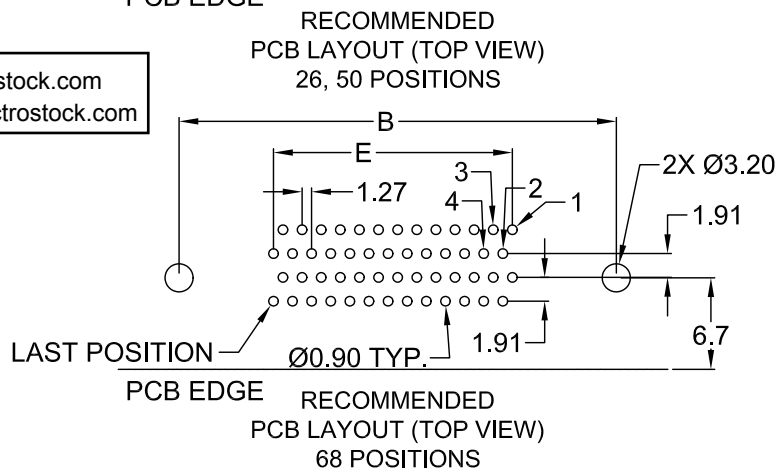
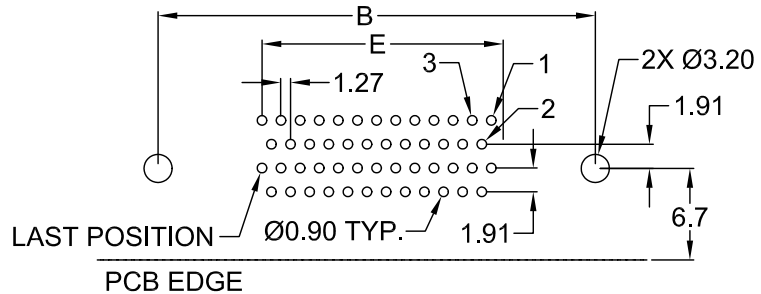
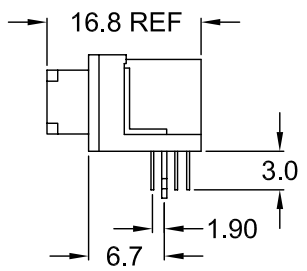
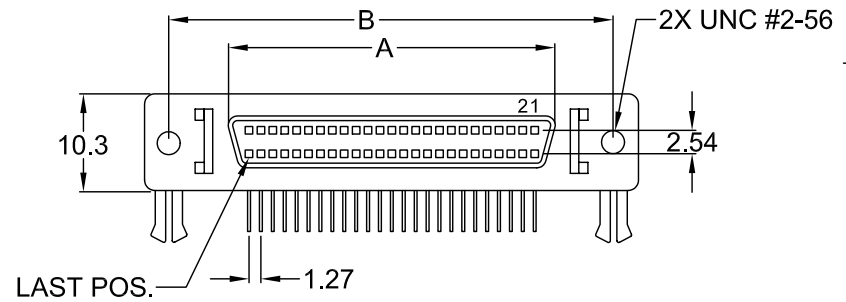
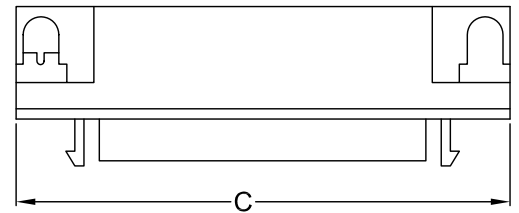


	6	5	4	3	2	1	
P/N	A	B	C	D	E	F	G
PDI-26RV	19.06	31.26	37.51	24.86	15.24	27.56	33.68
PDI-50RV	34.30	46.50	52.75	40.10	30.48	42.80	48.92
PDI-68RV	45.73	57.93	64.18	51.53	41.91	54.23	60.35

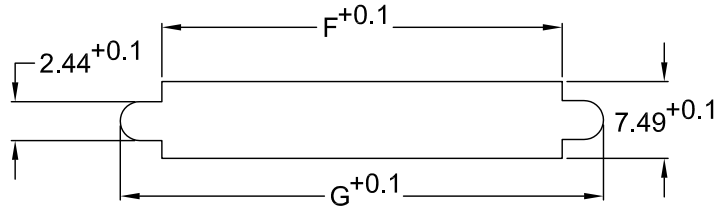
MATERIAL AND FINISH:
 Insulator: PBT, glass filled, UL 94V-0 rated, color black
 Contact: Phosphor bronze, Gold flash on mating area, 100µin Tin on solder tails.
 Shell: Zinc alloy, 60µin Nickel plated

ELECTRICAL SPECIFICATIONS:
 Rated current: 1A
 Insulation resistance: 500 Mohm min. @ 500VDC
 Dielectric withstanding voltage: 500VAC for one minute
 Contact resistance: 15 mohm max

ENVIRONMENTAL:
 Operating temperature: -55°C to +105°C



Distributed by Electro-Stock, Inc. sales@electrostock.com
 630-682-1542 Fax 630-682-1562 http://www.electrostock.com



RECOMMENDED
 PANEL CUT-OUT

REVISIONS	REV	DATE	CHANGE	CHNG	CHK	APPR
	A	7/20/00	REV. & ADD 26, 50 POS PCB	TD	TD	TD
	B	7/27/00	ADDED PANEL CUT-OUT	SS	PB	TD

TOLERANCE UNLESS OTHERWISE SPECIFIED		Power Dynamics, Inc.	
X ± 1 X.X ± 0.4 X.XX ± 0.20		Phone: 973 560-0019 Whippany, New Jersey Fax: 973 560-0076	
DRAWN BY TD DATE: 10/27/99		PART: 26, 50, 68 POSITION, R/A SCSI CONNECTOR W/ LATCH BLOCK & BOARD LOCK	
CHECK BY JJ DATE: 10/28/99		SHEET 1 of 1	
APPR BY SS DATE: 10/28/99		REV: B	
PART #: PDI-XXRV		ALL DIMENSIONS FOR REFERENCE ONLY DIMENSIONS ARE IN MILLIMETERS	
SIZE: A			
SCALE: NTS			