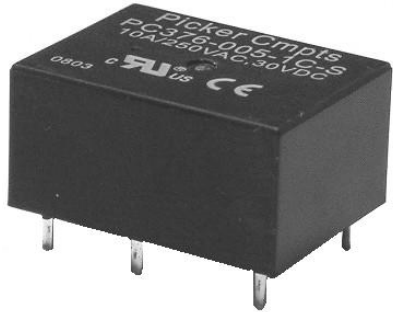


Subminiature PCB Power Relay	PC376
------------------------------	-------



FEATURES

- 10 Amp continuous contact capacity
- 1 Form A & 1 form C contact forms
- Subminiature design
- Class "B" insulation standard
- Sensitive version available
- 16 amp version available
- Sealed, immersion cleanable
- **Now available Lead Free & RoHS Compliant**

UL **us** File # E86876

UL/CUR RATINGS

Load Type	Form 1A SPST-NO	Form 1C SPDT
High Capacity	16 Amps @ 250 VAC	10 Amps @ 250 VAC
General Use	16 Amps @ 250 VAC	10 Amps @ 250 VAC
	16 Amps @ 30 VDC	10 Amps @ 30 VDC

CONTACT DATA

Material	AgCdO (Silver Cadmium Oxide)	
	AgSnOInO (Silver Tin Oxide Indium Oxide)	
Initial Contact Resistance	100 milliohms max @ 0.1A, 6VDC	
Service Life	Mechanical	1 X 10 ⁷ Operations
	Electrical	1 X 10 ⁵ Operations

CHARACTERISTICS

Operate Time	10 ms. Max.
Release Time	5 ms. Max.
Insulation Resistance	1000 megohms min, at 500VDC, 50%RH
Dielectric Strength	1500 Vrms, 1 min. between coil and contacts 1000 Vrms, 1 min. between open contacts
Shock Resistance	10 g, 11ms, functional; 100 g, destructive
Vibration Resistance	DA 1.6 mm, 10 - 55 Hz
Power Consumption	.2W & .45W
Ambient Temperature Range	-40 to 85 C operating for class B, -40 to 130 C storage
Weight	10 grams approx.

ORDERING INFORMATION

Example:	PC376	-1C	-12	S	-H	-X
Model						
Contact Form						
1A, 1C						
Coil Voltage						
Enclosure						
S: Sealed; C: Flux Free						
Coil Sensitivity						
Nil: Standard .45 W, H: Sensitive .2 W						
RoHS Compliant						
Nil: Not Rohs, -X: RoHS Compliant						

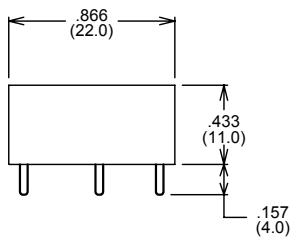
Distributed by Electro-Stock, Inc. sales@electrostock.com 630-682-1542 Fax 630-682-1562 <http://www.electrostock.com>

COIL DATA

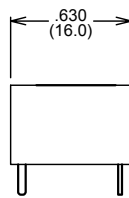
Coil Voltage	Resistance ohms \pm 10%				Must Operate Voltage Max. (VDC)	Must Release Voltage Min. (VDC)
	Standard Coil		Sensitive Coil			
3	20	0.45 W	45	0.20 W	2.25	0.15
5	55		125		3.75	0.25
6	80		180		4.50	0.30
9	180		400		6.75	0.45
12	320		720		9.00	0.60
18	720		1620		13.50	0.90
24	1280		2800		18.00	1.20

Dimensions in Inches (millimeters)

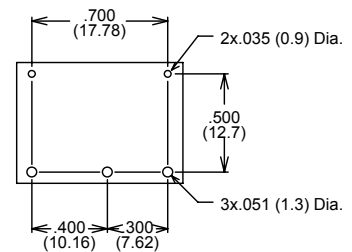
Side View



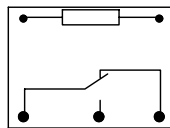
End View



**Bottom View
PC Board Layout**



Wiring Diagram



Notes:
 Contact Form C shown
 On Contact Forms A & B Unused Pins are Omitted
 Tolerances \pm .010 unless otherwise noted



Distributed by Electro-Stock, Inc. sales@electrostock.com 630-682-1542 Fax 630-682-1562 http://www.electrostock.com