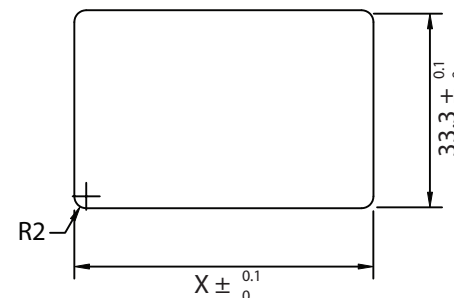
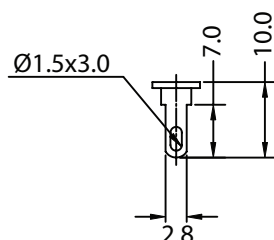
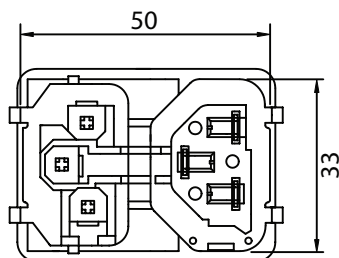
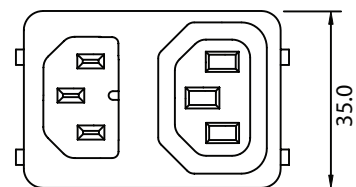
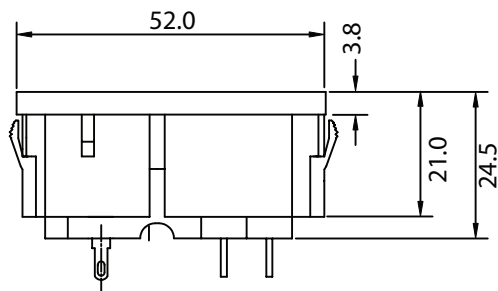


THESE DRAWINGS ARE THE PROPERTY OF QUALTEK ELECTRONICS AND NOT TO BE REPRODUCED FOR OR COMMUNICATED TO A THIRD PARTY WITHOUT THE EXPRESS WRITTEN PERMISSION OF AN OFFICER OF QUALTEK ELECTRONICS.

REVISION			
REV.	DESCRIPTION	DATE	APPROVED
B	RoHS Compliancy	06-01-06	DP



Distributed by Electro-Stock, Inc. sales@electrostock.com
630-682-1542 Fax 630-682-1562 http://www.electrostock.com

Panel Thickness:
0.8~1.2t X=50.3
1.3~2.0t X=50.5

NOTES:

HOUSING: THERMOPLASTIC
TERMINAL: COPPER ALLOY
RATING:
UL, CSA: 15A 250V AC
VDE: 10A 250V AC
INSULATION RESISTANCE: OVER 100 OHM 500V DC
DIELECTRIC STRENGTH: 2000V AC ONE MINUTE
APPROVALS: UL, CSA, VDE
RoHS COMPLIANT

CONTROLLED

Dim range (mm)	Tolerance +/- (mm)	Qualtek Electronics Corp. PPC DIVISION		
		Part Number:	773W-X2/01	RoHS Compliant
0-1	0.15	Description: INLET OUTLET MODULE		
1-6	0.20		UNIT: mm	REV. B
6-18	0.30			
18-50	0.50			
50-120	0.70	Drawn / Date	Checked / Date	Approved / Date
120-250	0.90	B.Zhang 07-02-02	07-02-02	JJH / 07-02-02
250-500	1.20			