

**DIN Rail Mountable Enclosures
AluRail
Product Drawings
Last Updated 7/14/2008**

Dimensional Drawings



TECHNICAL DATA:

- Color:
Aluminum Profile - Anodized
Profile Caps—Light gray similar to RAL 7035.
Special colors on request. Minimum quantities apply.
- Material:
Profiles—Extruded aluminum, Al Mg Si 0.5
Profile caps—Polyamide 6.6 FR
- Flammability (caps): UL 94 V0/1
- Surface Resistance (caps): >10¹⁵ Ohm to DIN 53482
- Ingress Protection: Up to IP 40/DIN EN 60529 depending on the enclosure construction.

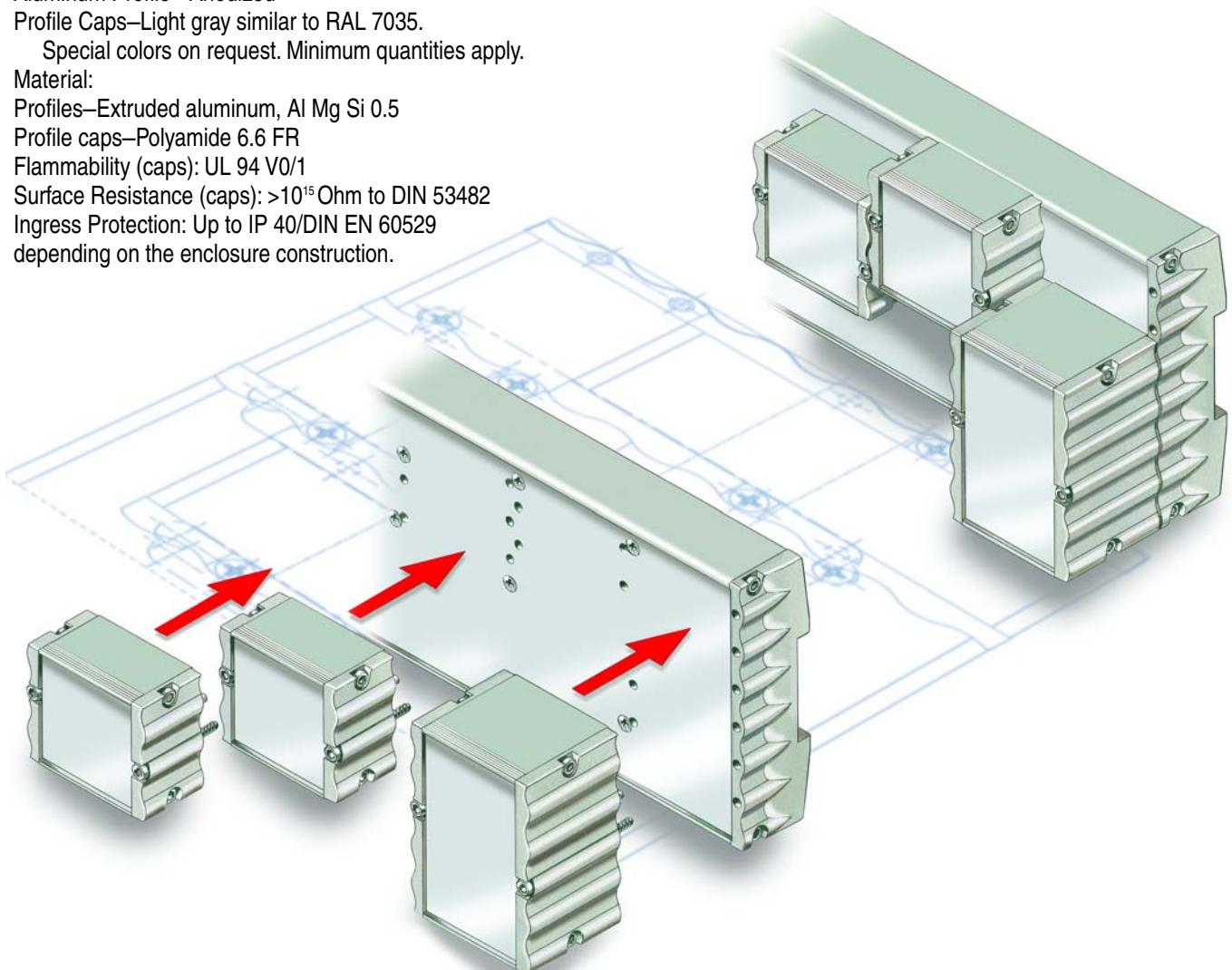
Finding an enclosure for DIN rail mountable components is not difficult. Several styles are available in various configurations. More difficult, however, is finding an enclosure that will readily

AluRail

accommodate components intended for it. Most DIN rail mountable enclosures are available in limited sizes and shapes and few “off the shelf” units can be modified to allow for expansion.

The AluRail series from Rose+Bopla is a highly versatile and flexible system for housing any DIN rail mounted component. AluRail units consist of an anodized extruded aluminum body, open on its front and both ends, available in 2 profile depths and 8 standard lengths. The ends are fitted with polyamide caps and a front panel of anodized aluminum. Red translucent plastic front panels are available on request. This system allows the extrusion and front panel to be cut to any length then capped for optimal fit.

AluRail housings support modular add-ons that can increase overall interior dimensions for larger projects. These can also be added as optional components, after manufacture. Other add-ons include membrane keypads and display windows. Ultimately, AluRail is a flexible system that offers easy expansion in a design unique to your application.



AluRail Components

| AluRail Basic Profiles ARP 75/31-... | | | | |
|--------------------------------------|-------------|--|--------------------|----------------|
| Model Number | Part Number | LG (Basic profile length) Inches/mm | Width Inches/mm | Drawing Page # |
| ARP 75/31-52.5 | 87010525 | 1.67/ 42.5 | 2.95/75 | 17-299 |
| ARP 75/31-70 | 87010700 | 2.36/ 60.0 | 2.95/75 | 17-299 |
| ARP 75/31-105 | 87011050 | 3.74/ 95.0 | 2.95/75 | 17-299 |
| ARP 75/31-140 | 87011400 | 5.12/130.0 | 2.95/75 | 17-299 |
| ARP 75/31-175 | 87011750 | 6.50/165.0 | 2.95/75 | 17-299 |
| ARP 75/31-210 | 87012100 | 7.87/200.0 | 2.95/75 | 17-299 |
| ARP 75/31-245 | 87012450 | 9.25/235.0 | 2.95/75 | 17-299 |
| ARP 75/31-1000 | 87010000 | 39.00/990.0 | 2.95/75 | 17-299 |

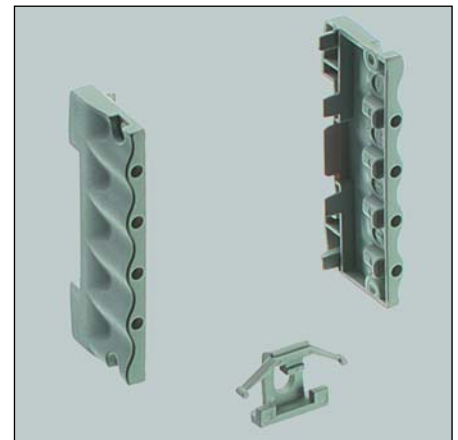
Basic profiles, **ARP 75/31** can be attached to a 35mm DIN rail, or mounted directly onto the wall. These anodized profiles feature integral slots for PC Boards or mounting plates. Module profiles can be screwed onto basic profiles permitting individualized enclosure construction.



ARP 75/31-...

| AluRail Profile Caps AR 75/31-... | | | |
|-----------------------------------|-------------|--|----------------|
| Model Number | Part Number | Description | Drawing Page # |
| AR 75/31-KS1 | 87301100 | Profile caps with drill holes for attaching the module | 17-299 |
| AR 75/31-KS2 | 87302100 | Profile caps without drill holes | 17-299 |

Note: Caps are made of Polyamide 6.6, light gray, similar to RAL 7035 in UL 94 V0. Aluminum caps are available on request.



Profile Caps AR 75/31-...

| AluRail Basic Front Panels AR 75-...FP | | | | |
|--|-------------|---------------------------------|---------------------------------|----------------|
| Part Number | Part Number | For Profile Length Inches/mm | Front Panel Length Inches/mm | Drawing Page # |
| AR 75-52.5 FP | 87400525 | 1.67/ 42.5 | 1.72/ 43.8 | 17-299 |
| AR 75-70 FP | 87400700 | 2.36/ 60.0 | 2.41/ 61.3 | 17-299 |
| AR 75-105 FP | 87401050 | 3.74/ 95.0 | 3.79/ 96.3 | 17-299 |
| AR 75-140 FP | 87401400 | 5.12/130.0 | 5.17/131.3 | 17-299 |
| AR 75-175 FP | 87401750 | 6.50/165.0 | 6.55/166.3 | 17-299 |
| AR 75-210 FP | 87402100 | 7.87/200.0 | 7.92/201.3 | 17-299 |
| AR 75-245 FP | 87402450 | 9.25/235.0 | 9.30/236.3 | 17-299 |
| AR 75-1000 FP | 87400000 | 39.00/990.0 | 39.03/991.3 | 17-299 |

Basic front panels **AR 75-...FP** are made of anodized aluminum as standard.

Note: Front panels made of red-translucent or clear plastic can also be supplied, on request, for use with LEDs or similar applications. Customer-specific PCBs with a front membrane can also be used as an operating front.



Basic front panels AR75-...FP

Din Rail Mountable Enclosures

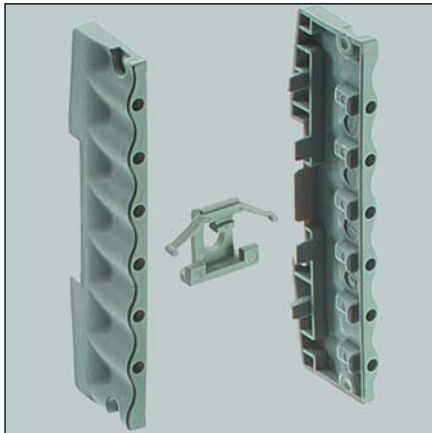
AluRail Components



ARP 105/31-...

| AluRail Basic Profiles ARP 105/31-... | | | | |
|---------------------------------------|-------------|--|--------------------|----------------|
| Model Number | Part Number | LG (Basic profile length) Inches/mm | Width Inches/mm | Drawing Page # |
| ARP 105/31-52.5 | 87020525 | 1.67/ 42.5 | 4.13/105 | 17-300 |
| ARP 105/31-70 | 87020700 | 2.36/ 60.0 | 4.13/105 | 17-300 |
| ARP 105/31-105 | 87021050 | 3.74/ 95.0 | 4.13/105 | 17-300 |
| ARP 105/31-140 | 87021400 | 5.12/130.0 | 4.13/105 | 17-300 |
| ARP 105/31-175 | 87021750 | 6.50/165.0 | 4.13/105 | 17-300 |
| ARP 105/31-210 | 87022100 | 7.87/200.0 | 4.13/105 | 17-300 |
| ARP 105/31-245 | 87022450 | 9.05/235.0 | 4.13/105 | 17-300 |
| ARP 105/31-1000 | 87020000 | 39.00/990.0 | 4.13/105 | 17-300 |

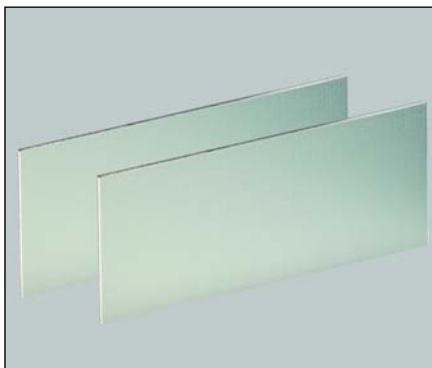
Basic profiles, **ARP 105/31**, can be attached to a 35mm DIN rail, or mounted directly onto the wall. These anodized profiles feature integral slots for PC Boards or mounting plates. Module profiles can be screwed onto basic profiles permitting individualized enclosure construction.



Profile Caps AR 105/31-...

| AluRail Profile Caps AR 105/31 | | | |
|--------------------------------|-------------|--|----------------|
| Model Number | Part Number | Description | Drawing Page # |
| AR 105/31-KS1 | 87301200 | Profile caps with drill holes for attaching the module | 17-300 |
| AR 105/31-KS2 | 87302200 | Profile caps without drill holes | 17-300 |

Note: Caps are made of Polyamide 6.6, light gray, similar to RAL 7035 in UL 94 V0. Aluminum caps are available on request.



Basic front panels AR105-...FP

| AluRail Basic Profile Front Panels AR 105-...FP | | | | |
|---|-------------|---------------------------------|---------------------------------|----------------|
| Model Number | Part Number | For Profile Length Inches/mm | Front Panel Length Inches/mm | Drawing Page # |
| AR 105-52.5 FP | 87410525 | 1.67/ 42.5 | 1.72/ 43.8 | 17-300 |
| AR 105-70 FP | 87410700 | 2.36/ 60.0 | 2.41/ 61.3 | 17-300 |
| AR 105-105 FP | 87411050 | 3.74/ 95.0 | 3.79/ 96.3 | 17-300 |
| AR 105-140 FP | 87411400 | 5.12/130.0 | 5.17/131.3 | 17-300 |
| AR 105-175 FP | 87411750 | 6.50/165.0 | 6.55/166.3 | 17-300 |
| AR 105-210 FP | 87412100 | 7.87/200.0 | 7.92/201.3 | 17-300 |
| AR 105-245 FP | 87412450 | 9.25/235.0 | 9.30/236.3 | 17-300 |
| AR 105-1000 FP | 87410000 | 39.00/990.0 | 39.03/991.3 | 17-300 |

Basic front panels, **AR 105-...FP**, are made of anodized aluminum as standard. Note: Front panels made of red-translucent or clear plastic can also be supplied, on request, for use with LEDs or similar applications. Customer-specific PCBs with a front membrane can also be used as an operating front.

AluRail Components

AluRail Module Profiles ARPM 45/27-...

| Model Number | Part Number | LM (Module profile length) Inches/mm | Width Inches/mm | Height Inches/mm | Drawing Page # |
|-----------------|-------------|--|--------------------|---------------------|-------------------|
| ARPM 45/27-35 | 87100350 | 0.98/ 25.0 | 1.77/45.0 | 1.08/27.5 | 17-301 |
| ARPM 45/27-52.5 | 87100525 | 1.67/ 42.5 | 1.77/45.0 | 1.08/27.5 | 17-301 |
| ARPM 45/27-70 | 87100700 | 2.36/ 60.0 | 1.77/45.0 | 1.08/27.5 | 17-301 |
| ARPM 45/27-105 | 87101050 | 3.74/ 95.0 | 1.77/45.0 | 1.08/27.5 | 17-301 |
| ARPM 45/27-140 | 87101400 | 5.12/130.0 | 1.77/45.0 | 1.08/27.5 | 17-301 |
| ARPM 45/27-175 | 87101750 | 6.50/165.0 | 1.77/45.0 | 1.08/27.5 | 17-301 |
| ARPM 45/27-210 | 87102100 | 7.87/200.0 | 1.77/45.0 | 1.08/27.5 | 17-301 |
| ARPM 45/27-245 | 87102450 | 9.25/235.0 | 1.77/45.0 | 1.08/27.5 | 17-301 |
| ARPM 45/27-1000 | 87100000 | 39.00/990.0 | 1.77/45.0 | 1.08/27.5 | 17-301 |

Module profiles, **ARPM 45/27** also feature integral slots and can be screwed onto the basic profile cap. The position of the module profile over the appropriate basic profile can be changed in 15mm increments. Module profile cap sets and aluminum front panels are offered as accessories.

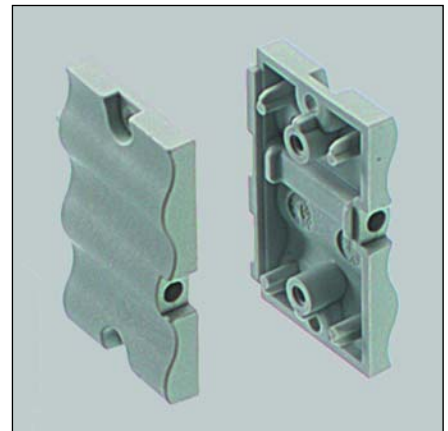


Module profiles, ARPM 45/27-...

AluRail Module Profile Caps ARM 45/27

| Model Number | Part Number | Description | Drawing Page # |
|--------------|-------------|--|-------------------|
| ARM 45-27 | 87303100 | Profile caps with drill holes for attaching the module | 17-303 |

ARM 45/27 module profile cap set is used to mount module profiles onto the basic profile. The caps can also be screwed onto the module profiles after being turned 180°. Mounted in this manner, the module front panel is at the front.



Module Profile Caps ARM 45/27-...

AluRail Module Profile Front Panels ARM 45-...FP

| Model Number | Part Number | For Module Profile Length Inches/mm | Front Panel Length Inches/mm | Drawing Page # |
|----------------|-------------|--|---------------------------------|-------------------|
| ARM 45-35 FP | 87420350 | 0.98/ 25.0 | 0.98/ 25.0 | 17-303 |
| ARM 45-52.5 FP | 87420525 | 1.67/ 42.5 | 1.67/ 42.5 | 17-303 |
| ARM 45-70 FP | 87420700 | 2.36/ 60.0 | 2.36/ 60.0 | 17-303 |
| ARM 45-105 FP | 87421050 | 3.74/ 95.0 | 3.74/ 95.0 | 17-303 |
| ARM 45-140 FP | 87421400 | 5.12/130.0 | 5.12/130.0 | 17-303 |
| ARM 45-175 FP | 87421750 | 6.50/165.0 | 6.50/165.0 | 17-303 |
| ARM 45-210 FP | 87422100 | 7.87/200.0 | 7.87/200.0 | 17-303 |
| ARM 45-245 FP | 87422450 | 9.25/235.0 | 9.25/235.0 | 17-303 |
| ARM 45-1000FP | 87420000 | 39.00/990.0 | 39.00/990.0 | 17-303 |

ARM 45-...FP, module front panels, for use with split module profiles and as a cover for module profile **ARM 45/27-...**, which is open on the side. These front panels are made of anodized aluminum as standard. Customer specific front panels can also be made, on request.



Module front panels ARM 45-...FP.

Din Rail Mountable Enclosures

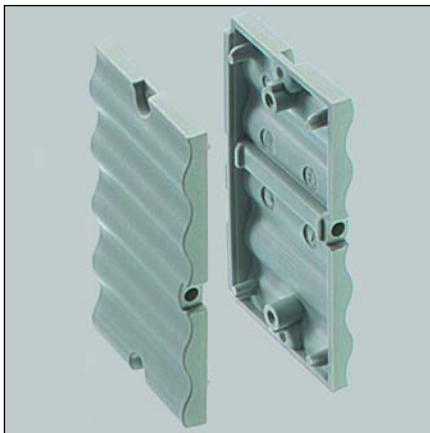
AluRail Components



Module profile, ARPM 75/42-...

| AluRail Module Profiles ARPM 75/42-... | | | | | |
|--|-------------|--|--------------------|---------------------|----------------|
| Model Number | Part Number | LM (Module profile length) Inches/mm | Width Inches/mm | Height Inches/mm | Drawing Page # |
| ARPM 75/42-35 | 87110350 | 0.98/ 25.0 | 2.95/75 | 1.67/42.5 | 17-302 |
| ARPM 75/42-52.5 | 87110525 | 1.67/ 42.5 | 2.95/75 | 1.67/42.5 | 17-302 |
| ARPM 75/42-70 | 87110700 | 2.36/ 60.0 | 2.95/75 | 1.67/42.5 | 17-302 |
| ARPM 75/42-105 | 87111050 | 3.74/ 95.0 | 2.95/75 | 1.67/42.5 | 17-302 |
| ARPM 75/42-140 | 87111400 | 5.12/130.0 | 2.95/75 | 1.67/42.5 | 17-302 |
| ARPM 75/42-175 | 87111750 | 6.50/165.0 | 2.95/75 | 1.67/42.5 | 17-302 |
| ARPM 75/42-210 | 87112100 | 7.87/200.0 | 2.95/75 | 1.67/42.5 | 17-302 |
| ARPM 75/42-245 | 87112450 | 9.25/235.0 | 2.95/75 | 1.67/42.5 | 17-302 |
| ARPM 75/42-1000 | 87110000 | 39.00/990.0 | 2.95/75 | 1.67/42.5 | 17-302 |

Module profile **ARPM 75/42** features integral slots and can be screwed onto the basic profile cap. The positions of the module profile over the appropriate basic profile can be changed in 15mm increments. Module profile cap sets and aluminum front panels are offered as accessories.



Module Profile Caps, ARM 75/42

| AluRail Module Profile Caps ARM 75/42 | | | |
|---------------------------------------|-------------|---|----------------|
| Model Number | Part Number | Description | Drawing Page # |
| ARM 75/42 | 87303200 | Cap set used to attach module profiles to basic profile | 17-304 |

ARM 75/42 module profile cap set is used to attach module profiles onto the basic profile. The caps can also be screwed onto the module profiles after being turned by 180°. Mounted in this manner, the module front panel is at the front.



Module Front Panels, ARM 75-...FP

| AluRail Module Front Panels ARM 75-...FP | | | | |
|--|-------------|--|---------------------------------|----------------|
| Model Number | Part Number | For Module Profile Length Inches/mm | Front Panel Length Inches/mm | Drawing Page # |
| ARM 75-35 FP | 87430350 | 0.98/ 25.0 | 0.98/ 25.0 | 17-299 |
| ARM 75-52.5 FP | 87430525 | 1.67/ 42.5 | 1.67/ 42.5 | 17-299 |
| ARM 75-70 FP | 87430700 | 2.36/ 60.0 | 2.36/ 60.0 | 17-299 |
| ARM 75-105 FP | 87431050 | 3.74/ 95.0 | 3.74/ 95.0 | 17-299 |
| ARM 75-140 FP | 87431400 | 5.12/130.0 | 5.12/130.0 | 17-299 |
| ARM 75-175 FP | 87431750 | 6.50/165.0 | 6.50/165.0 | 17-299 |
| ARM 75-210 FP | 87432100 | 7.87/200.0 | 7.87/200.0 | 17-299 |
| ARM 75-245 FP | 87432450 | 9.25/235.0 | 9.25/235.0 | 17-299 |
| ARM 75-1000 FP | 87430000 | 39.00/990.0 | 39.00/990.0 | 17-299 |

ARM 75-...FP module front panels are for use with split profiles, and as a cover for module profiles, which open on one side. Front panels are made of anodized aluminum as standard. Customer specific front panels can be made, on request.

AluRail Components

| AluRail Split Module Profiles ARPMG 00/27-... | | | | |
|---|-------------|--|---------------------|----------------|
| Model Number | Part Number | LM (Module profile length) Inches/mm | Height Inches/mm | Drawing Page # |
| ARPMG 00/27-35 | 87120350 | 0.98/ 25.0 | 1.08/27.5 | 17-303 |
| ARPMG 00/27-52.5 | 87120525 | 1.67/ 42.5 | 1.08/27.5 | 17-303 |
| ARPMG 00/27-70 | 87120700 | 2.36/ 60.0 | 1.08/27.5 | 17-303 |
| ARPMG 00/27-105 | 87121050 | 3.74/ 95.0 | 1.08/27.5 | 17-303 |
| ARPMG 00/27-140 | 87121400 | 5.12/130.0 | 1.08/27.5 | 17-303 |
| ARPMG 00/27-175 | 87121750 | 6.50/165.0 | 1.08/27.5 | 17-303 |
| ARPMG 00/27-210 | 87122100 | 7.87/200.0 | 1.08/27.5 | 17-303 |
| ARPMG 00/27-245 | 87122450 | 9.25/235.0 | 1.08/27.5 | 17-303 |
| ARPMG 00/27-1000 | 87120000 | 39.00/990.0 | 1.08/27.5 | 17-303 |

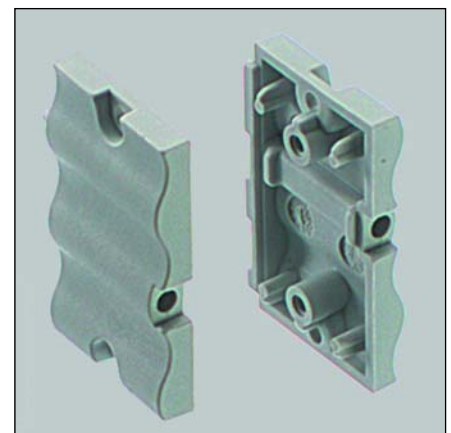
Split module profiles **ARPMG 00/27-...** have integral slots for PC Boards or mounting plates, and offer the added flexibility of custom sizing. **ARPMG 00/27-...**, can also be screwed onto basic profile caps. The position of the split module profile over the appropriate basic profile can be changed in 15mm steps. If the lengths of basic profile and the module profile are different, it is necessary to use the module bridges, AB...MB, when mounting the modules onto the front panel of the basic profile.



Split Module Profiles, ARPMG 00/27-...

| AluRail Module Profile Caps ARM 45/27 | | | |
|---------------------------------------|-------------|---|----------------|
| Model Number | Part Number | Description | Drawing Page # |
| ARM 45-27 | 87303100 | Profile caps used to attach module profiles to basic profiles | 17-303 |

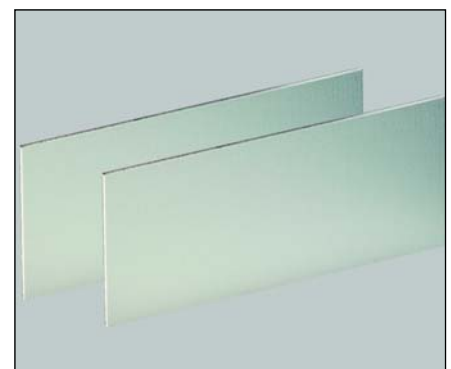
The module cap set **ARM 45/27** is used to mount split module profiles ARPMG 00/27 onto the basic profile. The caps can also be screwed onto the module profiles after being turned 180°. Mounted in this manner, the module front panel is at the front.



Module Profile Caps, ARM 45/27-...

| AluRail Module Front Panels ARM 45-...FP | | | | |
|--|-------------|--|---------------------------|----------------|
| Model Number | Part Number | For Module Profile Length Inches/mm | Panel Length Inches/mm | Drawing Page # |
| ARM 45-35 FP | 87420350 | 0.98/ 25.0 | 0.98/ 25.0 | 17-303 |
| ARM 45-52.5 FP | 87420525 | 1.67/ 42.5 | 1.67/ 42.5 | 17-303 |
| ARM 45-70 FP | 87420700 | 2.36/ 60.0 | 2.36/ 60.0 | 17-303 |
| ARM 45-105 FP | 87421050 | 3.74/ 95.0 | 3.74/ 95.0 | 17-303 |
| ARM 45-140 FP | 87421400 | 5.12/130.0 | 5.12/130.0 | 17-303 |
| ARM 45-175 FP | 87421750 | 6.50/165.0 | 6.50/165.0 | 17-303 |
| ARM 45-210 FP | 87422100 | 7.87/200.0 | 7.87/200.0 | 17-303 |
| ARM 45-245 FP | 87422450 | 9.25/235.0 | 9.25/235.0 | 17-303 |
| ARM 45-1000FP | 87420000 | 39.00/990.0 | 39.00/990.0 | 17-303 |

ARM 45-...FP, module front panels are for use with split profiles, and as a cover for module profiles, which are open on one side. Front panels are made of anodized aluminum as standard. Customer-specific panels may also be made, on request.



Module front panels ARM 45-...FP.

Din Rail Mountable Enclosures

AluRail Components



Split Module Profiles, ARPMG 00/42-...

| AluRail Split Module Profiles ARPMG 00/42-... | | | | |
|---|-------------|--|---------------------|----------------|
| Model Number | Part Number | LM (Module profile length) Inches/mm | Height Inches/mm | Drawing Page # |
| ARPMG 00/42-35 | 87130350 | 0.98/ 25.0 | 1.67/42.5 | 17-304 |
| ARPMG 00/42-52.5 | 87130525 | 1.67/ 42.5 | 1.67/42.5 | 17-304 |
| ARPMG 00/42-70 | 87130700 | 2.36/ 60.0 | 1.67/42.5 | 17-304 |
| ARPMG 00/42-105 | 87131050 | 3.74/ 95.0 | 1.67/42.5 | 17-304 |
| ARPMG 00/42-140 | 87131400 | 5.12/130.0 | 1.67/42.5 | 17-304 |
| ARPMG 00/42-175 | 87131750 | 6.50/165.0 | 1.67/42.5 | 17-304 |
| ARPMG 00/42-210 | 87132100 | 7.87/200.0 | 1.67/42.5 | 17-304 |
| ARPMG 00/42-245 | 87132450 | 9.25/235.0 | 1.67/42.5 | 17-304 |
| ARPMG 00/42-1000 | 87130000 | 39.00/990.0 | 1.67/42.5 | 17-304 |

Split module profiles, **ARPMG 00/42** have integral slots for PC Boards or mounting plates, and offer the added flexibility of custom sizing. ARPMG 00/42... can also be screwed onto basic profile caps. The position of the split module over the appropriate basic profile can be changed in 15mm steps. If the lengths of the basic profile and the module profile are different, it is necessary to use the module bridges, AB...MB, when mounting the modules onto the front panel of the basic profile.



Module Caps, ARM 75/42

| AluRail Module Profile Caps, ARM 75/42 | | | |
|--|-------------|---|----------------|
| Model Number | Part Number | Description | Drawing Page # |
| ARM 75/42 | 87303200 | Profile caps used to attach module profiles to basic profiles | 17-304 |

Module profile cap set, **ARM 75/42**, is used to attach split module profiles ARPMG 00/42, onto the basic profile. The caps can also be screwed onto the module profiles after being turned by 180°. Mounted in this manner, the module front panel is at the front.



Module Front Panels ARM 75-...FP

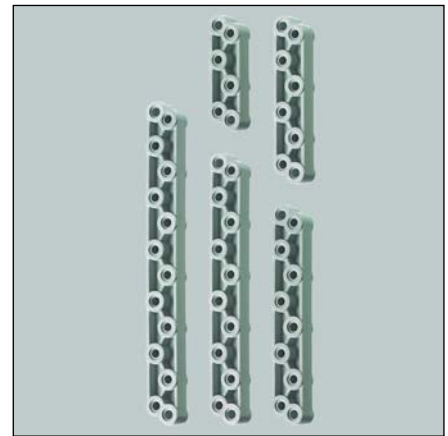
| AluRail Module Front Panels ARM 75-...FP | | | | |
|--|-------------|--|---------------------------------|----------------|
| Model Number | Part Number | For Module Profile Length Inches/mm | Front Panel Length Inches/mm | Drawing Page # |
| ARM 75-35 FP | 87430350 | 0.98/ 25.0 | 0.98/ 25.0 | 17-304 |
| ARM 75-52.5 FP | 87430525 | 1.67/ 42.5 | 1.67/ 42.5 | 17-304 |
| ARM 75-70 FP | 87430700 | 2.36/ 60.0 | 2.36/ 60.0 | 17-304 |
| ARM 75-105 FP | 87431050 | 3.74/ 95.0 | 3.74/ 95.0 | 17-304 |
| ARM 75-140 FP | 87431400 | 5.12/130.0 | 5.12/130.0 | 17-304 |
| ARM 75-175 FP | 87431750 | 6.50/165.0 | 6.50/165.0 | 17-304 |
| ARM 75-210 FP | 87432100 | 7.87/200.0 | 7.87/200.0 | 17-304 |
| ARM 75-245 FP | 87432450 | 9.25/235.0 | 9.25/235.0 | 17-304 |
| ARM 75-1000 FP | 87430000 | 39.00/990.0 | 39.00/990.0 | 17-304 |

ARM 75-...FP module front panels are for use with split profiles and as a cover for module profiles, which are open on one side. Front panels are made of anodized aluminum as standard. Customer-specific panels can also be made, on request.

AluRail Accessories

| AluRail Module Bridges AR...MB | | | | |
|--------------------------------|-------------|-------------------------|-------|----------------|
| Model Number | Part Number | Module Offset Inches/mm | Pack | Drawing Page # |
| AR 45 MB | 87300045 | 0.00 / 0.0 | 5 pcs | 17-305 |
| AR 60 MB | 87300060 | 0.59/15.0 | 5 pcs | 17-305 |
| AR 75 MB | 87300075 | 1.18/30.0 | 5 pcs | 17-305 |
| AR 90 MB | 87300090 | 1.77/45.0 | 5 pcs | 17-305 |
| AR 105 MB | 87300105 | 2.36/60.0 | 5 pcs | 17-305 |

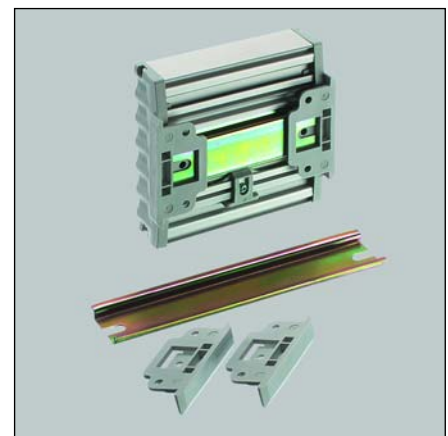
If the lengths of the basic profile and the module profile(s) are different, it is necessary to use the module bridges, **AR...MB**, when attaching the modules. The module bridges can be screwed in position under the front panel or under a PCB. Note the positions shown on the drawing page when selecting the module bridges.



Module Bridges, AR...MB

| AluRail Wall Mounting sets AR ... WB | | | |
|--------------------------------------|-------------|---------------------------|----------------|
| Model Number | Part Number | DIN Rail Length Inches/mm | Drawing Page # |
| AR 52.5 WB | 87310525 | 1.67/ 42.5 | 17-300 |
| AR 70 WB | 87310700 | 2.36/ 60.0 | 17-300 |
| AR 105 WB | 87311050 | 3.74/ 95.0 | 17-300 |
| AR 140 WB | 87311400 | 5.12/130.0 | 17-300 |
| AR 175 WB | 87311750 | 6.50/165.0 | 17-300 |
| AR 210 WB | 87312100 | 7.87/200.0 | 17-300 |
| AR 245 WB | 87312450 | 9.25/235.0 | 17-300 |

The wall mounting set is used for direct mounting of the AluRail enclosure on the wall.

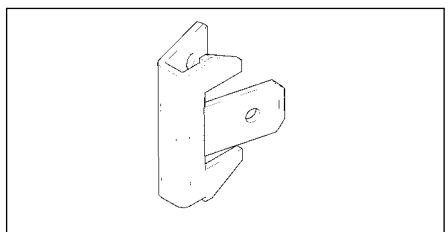


Wall Mount Set, AR...WB

| AluRail Grounding Set AR-E | | | |
|----------------------------|-------------|---------------|----------------|
| Model Number | Part Number | Description | Drawing Page # |
| AR-E | 87309010 | Grounding set | 17-306 |

By using commercially available cable lugs for flat connectors acc. to DIN 46244-A6.3-0-8, the grounding set AR-E permits grounding of the enclosure parts or the fitted components.

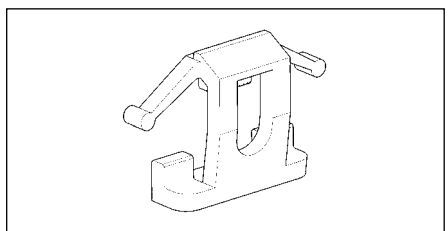
Note: The grounding claw is pressed into the basic profile during assembly and breaks through the anodized layer, thus ensuring proper contact.



Grounding Set AR-E

| AluRail Snap-On Device AR-R | | | |
|-----------------------------|-------------|----------------|----------------|
| Model Number | Part Number | Description | Drawing Page # |
| AR-R | 87309020 | Snap-on device | 17-306 |

The snap-on device is used to mount the basic profiles onto the DIN rail (35 mm) acc. to DIN EN 60715 TH 35. One snap-on device including positioning screw is supplied with profile cap sets, AR 75/31 and AR 105/31. Depending on the intended application, the use of an additional snap-on device is necessary. This guarantees optimal support of the enclosure on the DIN rail.



Snap-On Device, AR-R



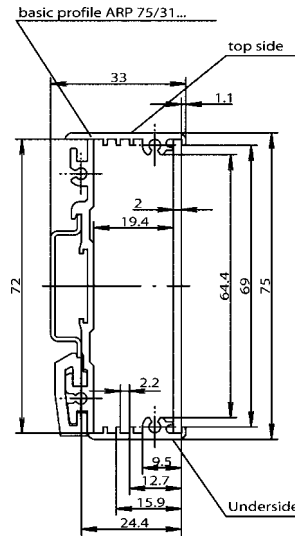
Standard Features

• Basic profile that can be attached to a 35mm DIN rail, or mounted directly onto the wall. These anodized profiles feature integral slots for PC Boards or mounting plates.

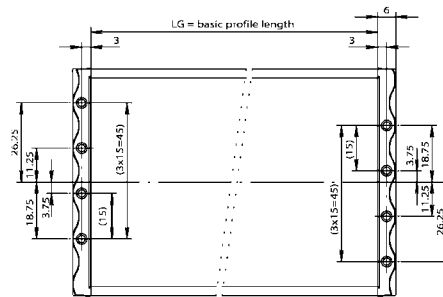
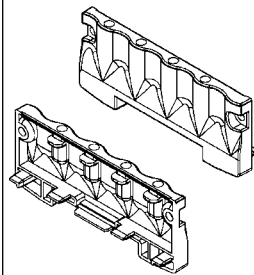
- ARP 75/31-52.5/87010525
- ARP 75/31-70/87010700
- ARP 75/31-105/87011050
- ARP 75/31-140/87011400
- ARP 75/31-175/87011750
- ARP 75/31-210/87012100
- ARP 75/31-245/87012450
- ARP 75/31-1000/87010000

Accessories

- AR 75/31-KS 1/87301100 Profile cap with drill holes for mounting the module.
- AR 75/31-KS 2/87302100 Profile cap without drill holes.
- AR 75-52.5 FP/87400525 Front panel for profile length 42.5mm.
- AR 75-70 FP/87400700 Front panel for profile length 60mm.
- AR 75-105 FP/87401050 Front panel for profile length 95mm.
- AR 75-140 FP/87401400 Front panel for profile length 130mm.
- AR 75-175 FP/87401750 Front panel for profile length 165mm.
- AR 75-210 FP/87402100 Front panel for profile length 200mm.
- AR 75-245 FP/87402450 Front panel for profile length 235mm.
- AR 75-1000 FP/87400000 Front panel for profile length 990mm.
- AR 45 MB/87300045 Module bridge. Module offset 0. (Pack of 5)
- AR 60 MB/87300060 Module bridge. Module offset 15. (Pack of 5).
- AR 75 MB/87300075 Module bridge. Module offset 30. (Pack of 5).
- AR 90 MB/87300090 Module bridge. Module offset 45. (Pack of 5).
- AR 105 MB/87300105 Module bridge. Module offset 60. (Pack of 5).
- AR 52.5 WB/87310525 Wall mounting set. (DIN rail length 42.5mm).
- AR 70 WB/87310700 Wall mounting set. (DIN rail length 60mm).
- AR 105 WB/87311050 Wall mounting set. (DIN rail length 95mm).
- AR 140 WB/87311400 Wall mounting set. (DIN rail length 130mm).
- AR 175 WB/87311750 Wall mounting set. (DIN rail length 165mm).
- AR 210 WB/87312100 Wall mounting set. (DIN rail length 200mm).
- AR 245 WB/87312450 Wall mounting set. (DIN rail length 235mm).
- AR-E/87309010 Grounding set. (Pack of 5)
- AR-R/87309020 Snap on device. (Pack of 5).



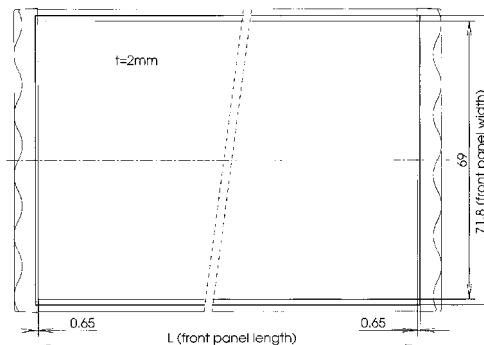
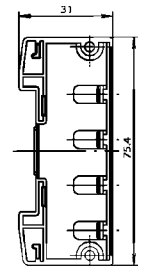
Basic Profile



Front Panel

Profile Caps

Internal view



| Table of Measurements | |
|-----------------------|--------------------|
| Front Panel | Front Panel Length |
| AR 75-52.5 FP | 43.8 |
| AR 75-70 FP | 61.3 |
| AR 75-105 FP | 96.3 |
| AR 75-140 FP | 131.3 |
| AR 75-175 FP | 166.3 |
| AR 75-210 FP | 201.3 |
| AR 75-245 FP | 236.3 |
| AR 75-1000 FP | 991.3 |

Din Rail Mountable Enclosures

ARP 105/31

Page 14-12, 14-14

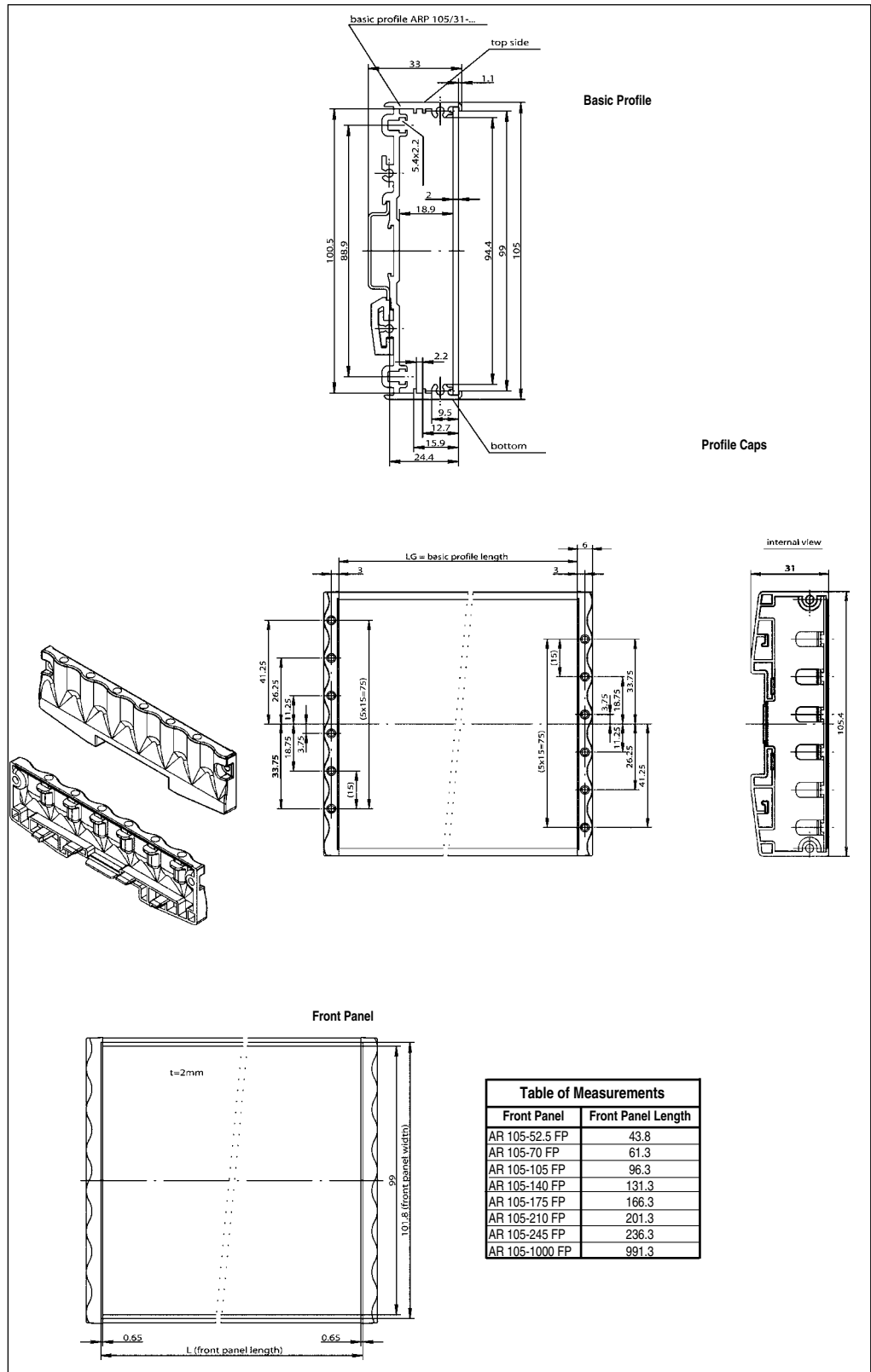
Standard Features

- Basic profile that can be attached to a 35mm DIN rail, or mounted directly onto the wall. These anodized profiles feature integral slots for PC Boards or mounting plates.

- ARP 105/31-52.5/87020525
- ARP 105/31-70/87020700
- ARP 105/31-105/87021050
- ARP 105/31-140/87021400
- ARP 105/31-175/87021750
- ARP 105/31-210/87022100
- ARP 105/31-245/87022450
- ARP 105/31-1000/87020000

Accessories

- AR 105/31-KS 1/87301200 Profile cap with drill holes for mounting the module.
- AR 105/31-KS 2/87302200 Profile cap without drill holes.
- AR 105-52.5 FP/87410525 Front panel for profile length 42.5mm.
- AR 105-70 FP/87410700 Front panel for profile length 60mm.
- AR 105-105 FP/87411050 Front panel for profile length 95mm.
- AR 105-140 FP/87411400 Front panel for profile length 130mm.
- AR 105-175 FP/87411750 Front panel for profile length 165mm.
- AR 105-210 FP/87412100 Front panel for profile length 200mm.
- AR 105-245 FP/87412450 Front panel for profile length 235mm.
- AR 105-1000 FP/87410000 Front panel for profile length 990mm.
- AR 45 MB/87300045 Module bridge. Module offset 0. (Pack of 5).
- AR 60 MB/87300060 Module bridge. Module offset 15. (Pack of 5).
- AR 75 MB/87300075 Module bridge. Module offset 30. (Pack of 5).
- AR 90 MB/87300090 Module bridge. Module offset 45. (Pack of 5).
- AR 105 MB/87300105 Module bridge. Module offset 60. (Pack of 5).
- AR 52.5 WB/87310525 Wall mounting set. DIN rail length 42.5mm.
- AR 70 WB/87310700 Wall mounting set. DIN rail length 60mm.
- AR 105 WB/87311050 Wall mounting set. DIN rail length 95mm.
- AR 140 WB/87311400 Wall mounting set. DIN rail length 130mm.
- AR 175 WB/87311750 Wall mounting set. DIN rail length 165mm.
- AR 210 WB/87312100 Wall mounting set. DIN rail length 200mm.
- AR 245 WB/87312450 Wall mounting set. DIN rail length 235mm.
- AR-E/87309010 Grounding set. (Pack of 5).
- AR-R/87309020 Snap on device. (Pack of 5).





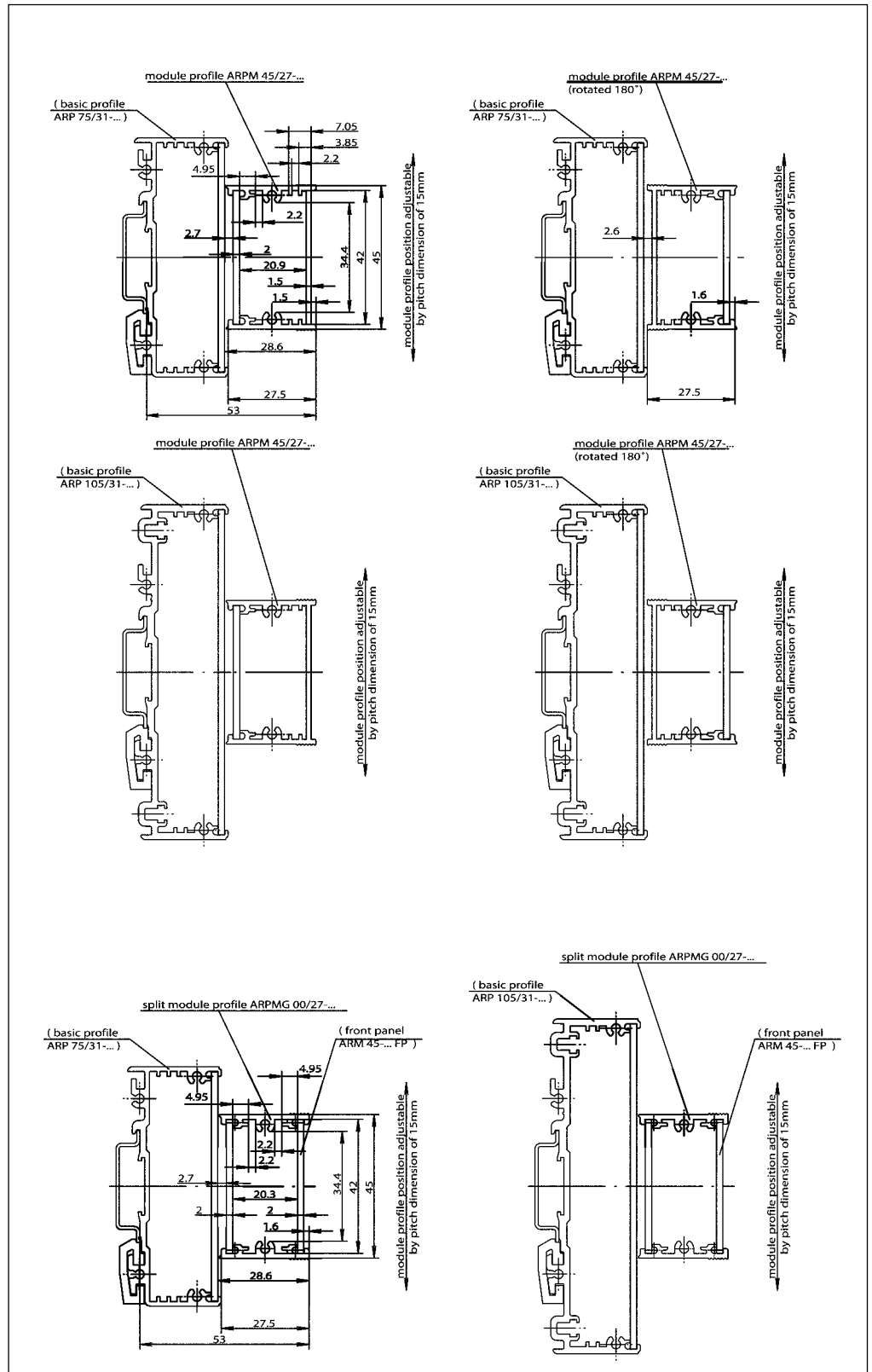
Standard Features

• Module profiles feature integral slots for PCBs or mounting plates, and can be screwed onto the basic profile cap. The position of the module profile over the appropriate basic profile can be changed in 15mm increments.

- ARPM 45/27-35/87100350
- ARPM 45/27-52.5/87100525
- ARPM 45/27-70/87100700
- ARPM 45/27-105/87101050
- ARPM 45/27-140/87101400
- ARPM 45/27-175/87101750
- ARPM 45/27-210/87102100
- ARPM 45/27-245/87102450
- ARPM 45/27-1000/87100000

Accessories

- **ARM 45-27/87303100** Profile cap with drill holes for mounting the module.
- **ARM 45-35 FP/87420350** Front panel for module profile length 25mm.
- **ARM 45-52.5 FP/87420525** Front panel for module profile length 42.5mm.
- **ARM 45-70 FP/87420700** Front panel for module profile length 60mm.
- **ARM 45-105 FP/87421050** Front panel for module profile length 95mm.
- **ARM 45-140 FP/87421400** Front panel for module profile length 130mm.
- **ARM 45-175 FP/87421750** Front panel for module profile length 165mm.
- **ARM 45-210 FP/87422100** Front panel for module profile length 200mm.
- **ARM 45-245 FP/87422450** Front panel for module profile length 235mm.
- **ARM 45-1000 FP/87420000** Front panel for module profile length 990mm.
- **AR 45 MB/87300045** Module bridge. Module offset 0. (Pack of 5).
- **AR 60 MB/87300060** Module bridge. Module offset 15. (Pack of 5).
- **AR 75 MB/87300075** Module bridge. Module offset 30. (Pack of 5).
- **AR 90 MB/87300090** Module bridge. Module offset 45. (Pack of 5).
- **AR 105 MB/87300105** Module bridge. Module offset 60. (Pack of 5).
- **AR-E/87309010** Ground set. (Pack of 5).



Dimensional Drawings

Din Rail Mountable Enclosures

ARPM 75/42-...

Page 14-1, 14-16

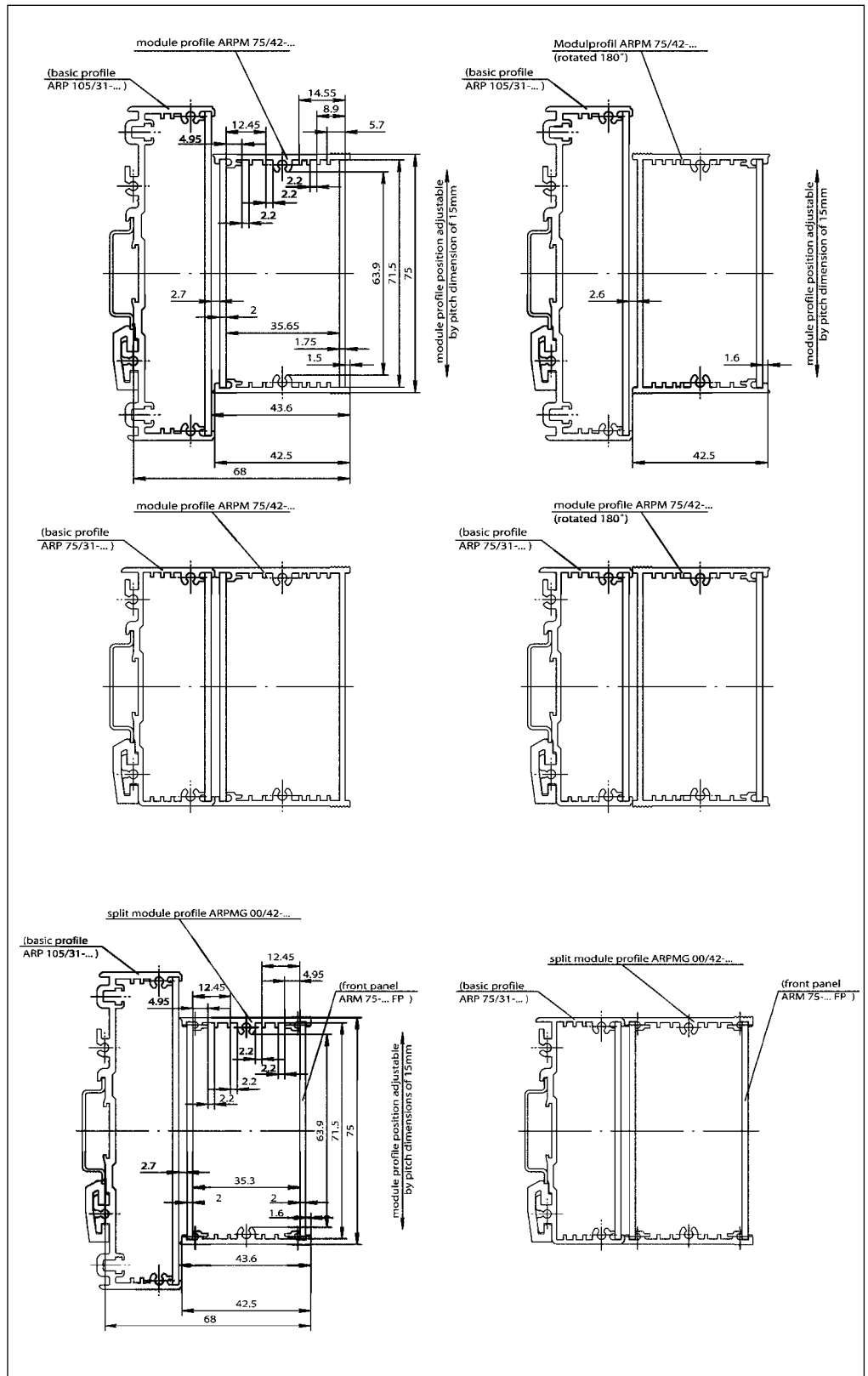
Standard Features

- Module profiles feature integral slots for PCBs or mounting plates, and can be screwed onto the basic profile cap. The position of the module profile over the appropriate basic profile can be changed in 15mm increments.

ARPM 75/42-35/87110350
 ARPM 75/42-52.5/87110525
 ARPM 75/42-70/87110700
 ARPM 75/42-105/87111050
 ARPM 75/42-140/87111400
 ARPM 75/42-175/87111750
 ARPM 75/42-210/87112100
 ARPM 75/42-245/87112450
 ARPM 75/42-1000/87110000

Accessories

- **ARM 75/42/87303200** Profile cap with drill holes for mounting the module.
- **ARM 75-35 FP/87430350** Front panel for module profile length 25mm.
- **ARM 75-52.5 FP/87430525** Front panel for module profile length 42.5mm.
- **ARM 75-70 FP/87430700** Front panel for module profile length 60mm.
- **ARM 75-105 FP/87431050** Front panel for module profile length 95mm.
- **ARM 75-140 FP/87431400** Front panel for module profile length 130mm.
- **ARM 75-175 FP/87431750** Front panel for module profile length 165mm.
- **ARM 75-210 FP/87432100** Front panel for module profile length 200mm.
- **ARM 75-245 FP/87432450** Front panel for module profile length 235mm.
- **ARM 75-1000 FP/87430000** Front panel for module profile length 990mm.
- **AR 45 MB/87300045** Module bridge. Module offset 0. (Pack of 5).
- **AR 60 MB/87300060** Module bridge. Module offset 15. (Pack of 5).
- **AR 75 MB/87300075** Module bridge. Module offset 30. (Pack of 5).
- **AR 90 MB/87300090** Module bridge. Module offset 45. (Pack of 5).
- **AR 105 MB/87300105** Module bridge. Module offset 60. (Pack of 5).
- **AR-E/87309010** Ground set. (Pack of 5).





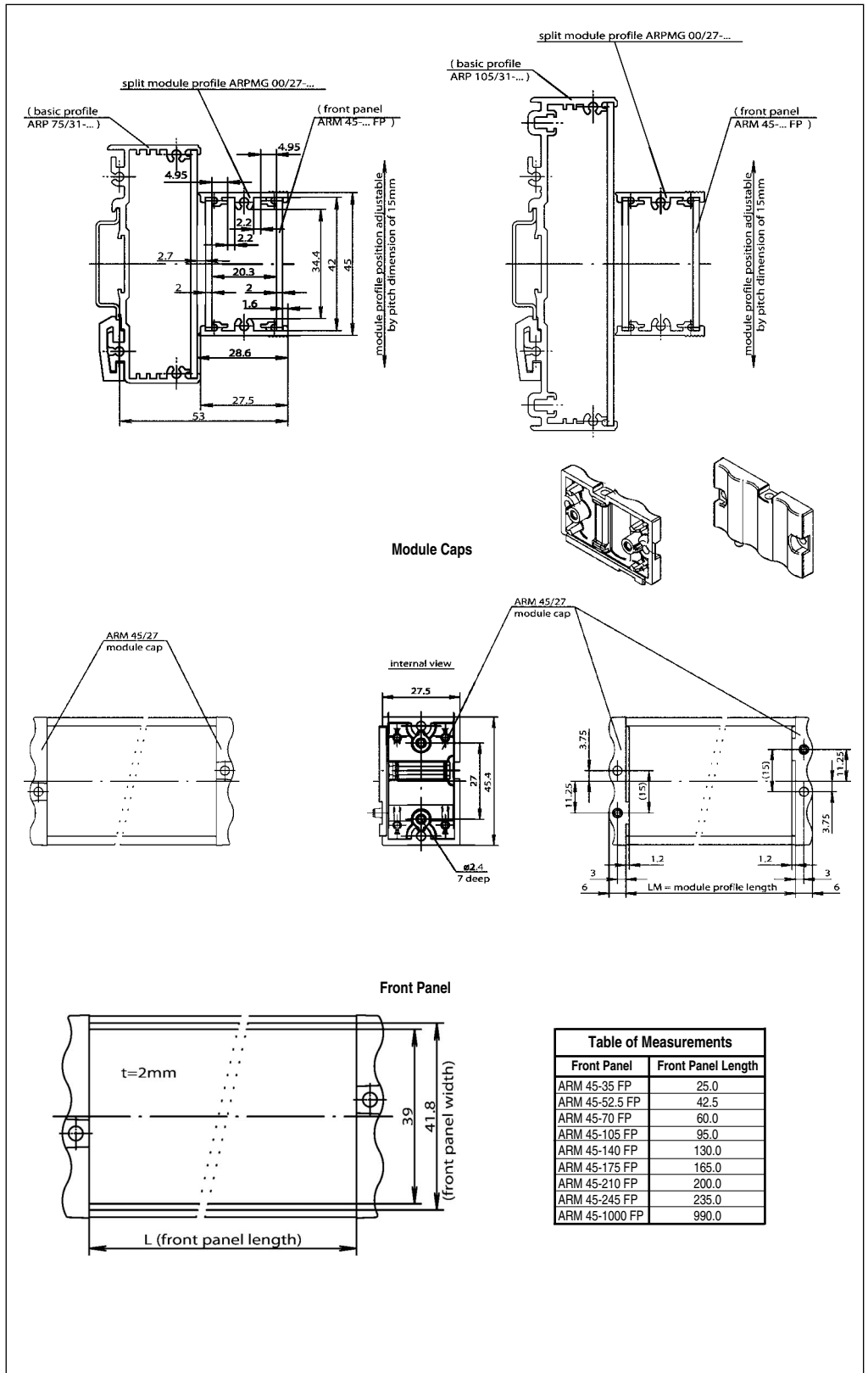
Standard Features

Split Module profiles can be screwed onto basic profile caps. Split module profiles have integral slots for PC Boards or mounting plates, and offer the added flexibility of custom sizing. The position of the split module profile over the appropriate basic profile can be changed in 15mm steps.

- ARPMG 00/27-35/87120350
- ARPMG 00/27-52.5/87120525
- ARPMG 00/27-70/87120700
- ARPMG 00/27-105/87121050
- ARPMG 00/27-140/87121400
- ARPMG 00/27-175/87121750
- ARPMG 00/27-210/87122100
- ARPMG 00/27-245/87122450
- ARPMG 00/27-1000/87120000

Accessories

- **ARM 45-27/87303100** Profile cap with drill holes for mounting the module.
- **ARM 45-35 FP/87420350** Front panel for module profile length 25mm.
- **ARM 45-52.5 FP/87420525** Front panel for module profile length 42.5mm.
- **ARM 45-70 FP/87420700** Front panel for module profile length 60mm.
- **ARM 45-105 FP/87421050** Front panel for module profile length 95mm.
- **ARM 45-140 FP/87421400** Front panel for module profile length 130mm.
- **ARM 45-175 FP/87421750** Front panel for module profile length 165mm.
- **ARM 45-210 FP/87422100** Front panel for module profile length 200mm.
- **ARM 45-245 FP/87422450** Front panel for module profile length 235mm.
- **ARM 45-1000 FP/87420000** Front panel for module profile length 990mm.
- **AR 45 MB/87300045** Module bridge. Module offset 0. (Pack of 5).
- **AR 60 MB/87300060** Module bridge. Module offset 15. (Pack of 5).
- **AR 75 MB/87300075** Module bridge. Module offset 30. (Pack of 5).
- **AR 90 MB/87300090** Module bridge. Module offset 45. (Pack of 5).
- **AR 105 MB/87300105** Module bridge. Module offset 60. (Pack of 5).
- **AR-E/87309010** Ground set. (Pack of 5).



Dimensional Drawings

Din Rail Mountable Enclosures

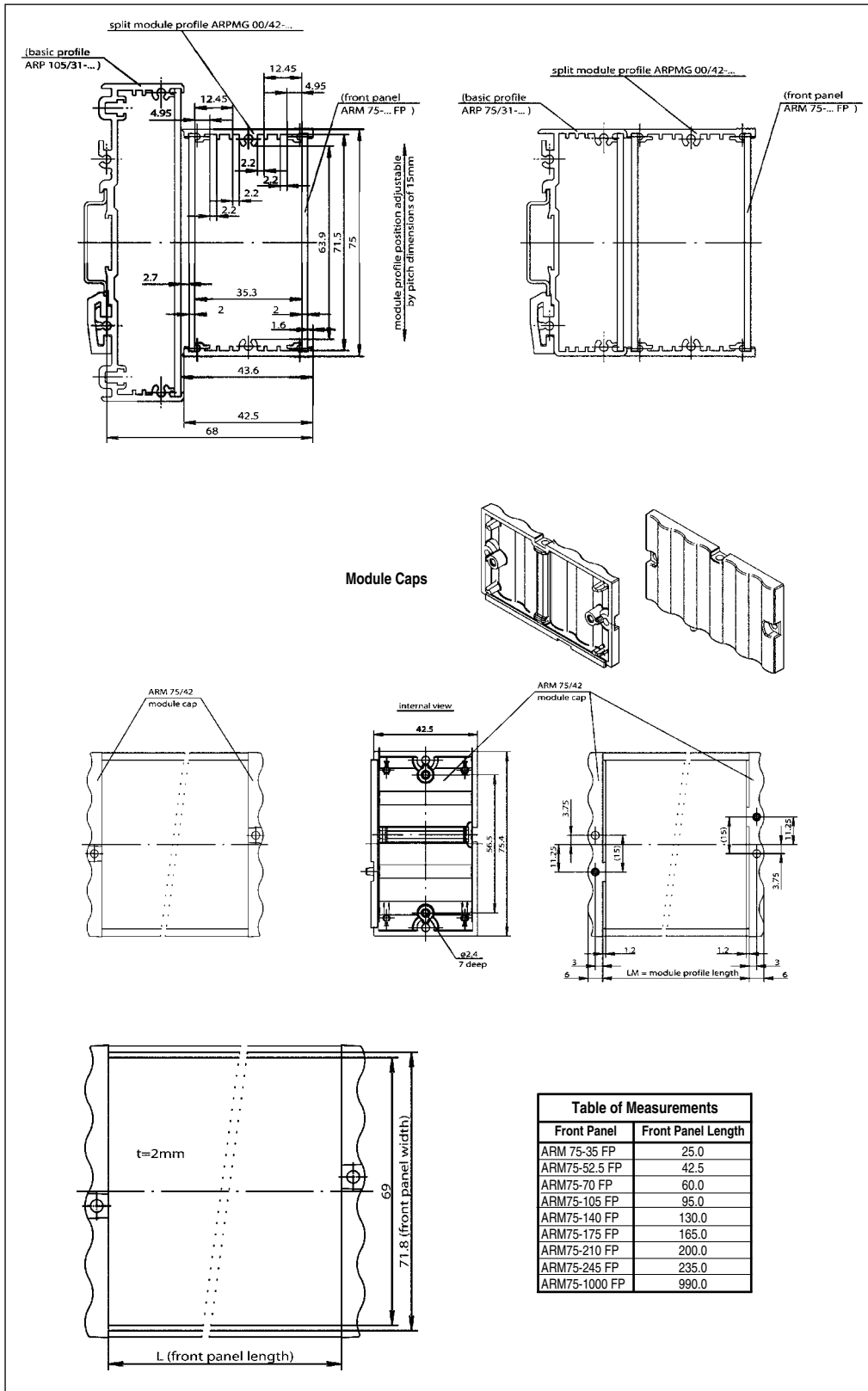
Standard Features

Split Module profiles can be screwed onto basic profile caps. Split module profiles have the integral slots for PC Boards or mounting plates, and offer the added flexibility of custom sizing. The position of the split module over the appropriate basic profile can be changed in 15mm steps.

- ARPMG 00/42-35/87130350
- ARPMG 00/42-52.5/87130525
- ARPMG 00/42-70/87130700
- ARPMG 00/42-105/87131050
- ARPMG 00/42-140/87131400
- ARPMG 00/42-175/87131750
- ARPMG 00/42-210/87132100
- ARPMG 00/42-245/87132450
- ARPMG 00/42-1000/87130000

Accessories

- **ARM 45/42/87303200** Cap set used to mount module profiles to basic profile.
- **ARM 75-35 FP/87430350** Front panel for module profile length 25mm.
- **ARM 75-52.5 FP/87430525** Front panel for module profile length 42.5mm.
- **ARM 75-70 FP/87430700** Front panel for module profile length 60mm.
- **ARM 75-105 FP/87431050** Front panel for module profile length 95mm.
- **ARM 75-140 FP/87431400** Front panel for module profile length 130mm.
- **ARM 75-175 FP/87431750** Front panel for module profile length 165mm.
- **ARM 75-210 FP/87432100** Front panel for module profile length 200mm.
- **ARM 75-245 FP/87432450** Front panel for module profile length 235mm.
- **ARM 75-1000 FP/87430000** Front panel for module profile length 990mm.
- **AR 45 MB/87300045** Module bridge. Module offset 0. (Pack of 5).
- **AR 60 MB/87300060** Module bridge. Moduler offset 15. (Pack of 5).
- **AR 75 MB/87300075** Module bridge. Module offset 30. (Pack of 5).
- **AR 90 MB/87300090** Module bridge. Module offset 45. (Pack of 5).
- **AR 105 MB/87300105** Module bridge. Module offset 60. (Pack of 5).
- **AR-E/87309010** Ground set. (Pack of 5).



| Table of Measurements | |
|-----------------------|--------------------|
| Front Panel | Front Panel Length |
| ARM 75-35 FP | 25.0 |
| ARM75-52.5 FP | 42.5 |
| ARM75-70 FP | 60.0 |
| ARM75-105 FP | 95.0 |
| ARM75-140 FP | 130.0 |
| ARM75-175 FP | 165.0 |
| ARM75-210 FP | 200.0 |
| ARM75-245 FP | 235.0 |
| ARM75-1000 FP | 990.0 |



AluRail Accessories

AluRail Module Bridges AR...MB

If the lengths of the basic profile and the module (profile) are different, it is necessary to use the module bridges AR...MB when mounting the modules. The module bridges can be screwed in position under the front panel or under a PCB.

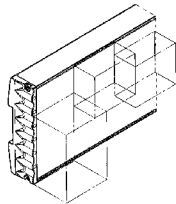
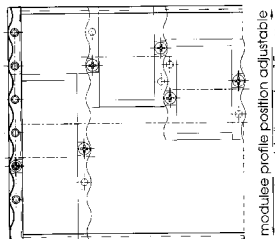
- AR 45 MB/87300045
- AR 60 MB/87300060
- AR 75 MB/87300075
- AR 90 MB/87300090
- AR 105 MB/87300105

①

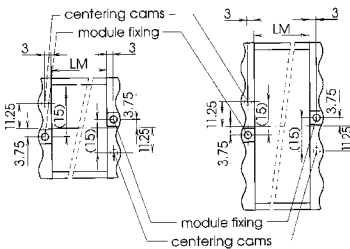
Position of the modules

The size and position of the modules must be specified. The position is determined by the base grid (see ③) and the selected modules.

LM = module profile length

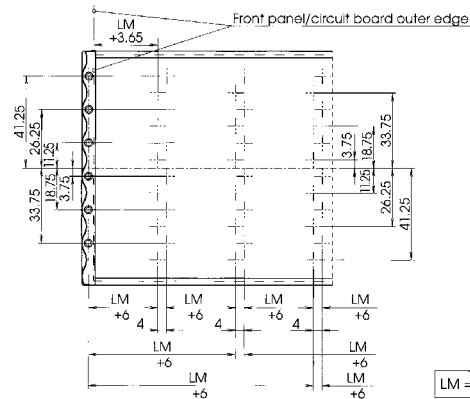


module ARPM 45/27... module ARPMG 00/27...
module ARPM 75/42... module ARPMG 00/42...



③

Base grid for drill-holes $\varnothing 3.2+0.1$ (shown without fixing drill-holes for the module bridges (see ④))



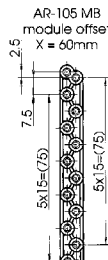
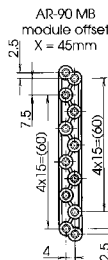
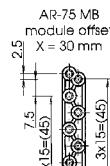
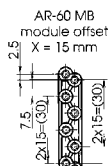
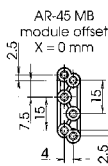
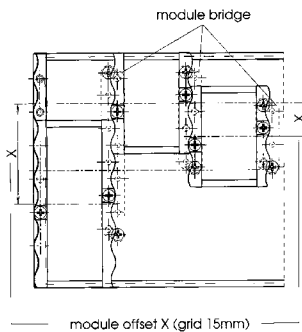
LM = module profile length

②

Selection of module bridges

After the positions have been determined, select the suitable module bridges from the 5 available.

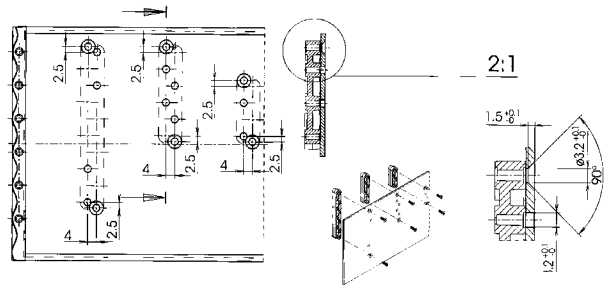
The clearance from one module centre to the next = module offset X. This clearance determines the choice of module bridge.



④

Processing the front panel / circuit board

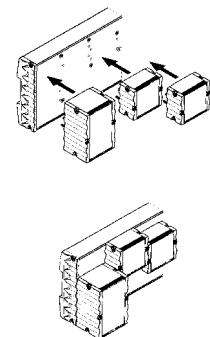
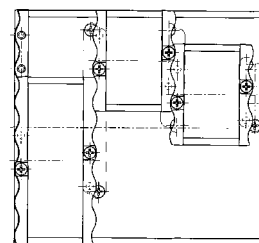
Drill-holes $\varnothing 3.2+0.1$ must now be drilled at the required positions. In addition, 2 countersunk fixing drill-holes are required for each module bridge (see drawing for dimensions). The module bridges can now be screwed onto the front panel / circuit board.



⑤

Fitting the modules

After the base enclosure has been assembled, the modules can be clipped on and screwed into position.



Din Rail Mountable Enclosures

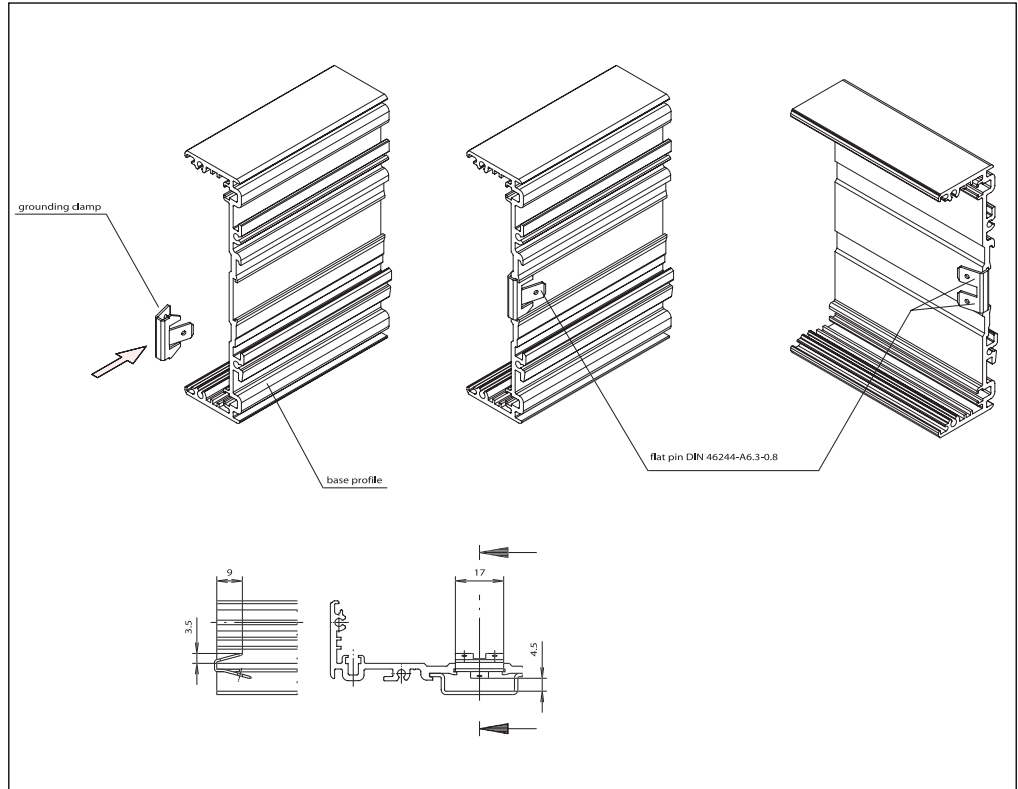
AluRail Accessories

Page 14-1, 14-19

AluRail Grounding set AR-E/87309010

By using commercially available cable lugs for flat connectors acc. to DIN 46244-A6.3-0.8, the grounding set AR-E permits grounding of the enclosure parts or the fitted components.

Note: The grounding claw is pressed into the basic profile during assembly and breaks through the anodized layer, so ensuring proper contact.

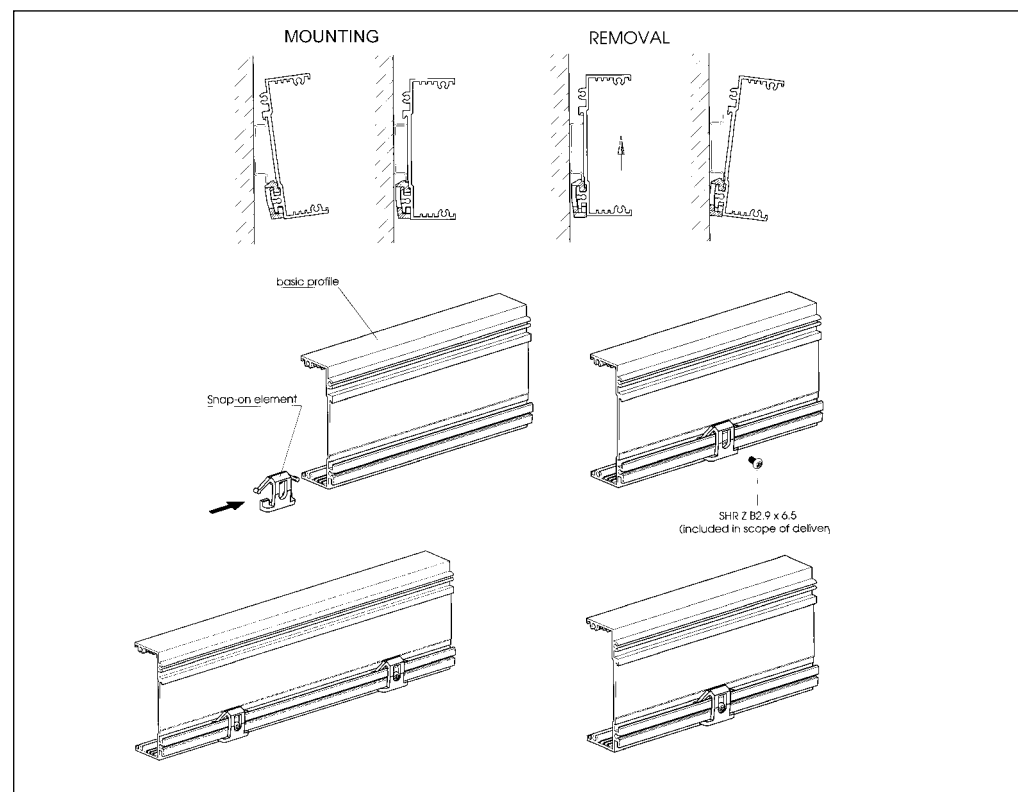


AluRail Accessories

Page 14-1, 14-19

AluRail Snap-On Element AR-R/87309020

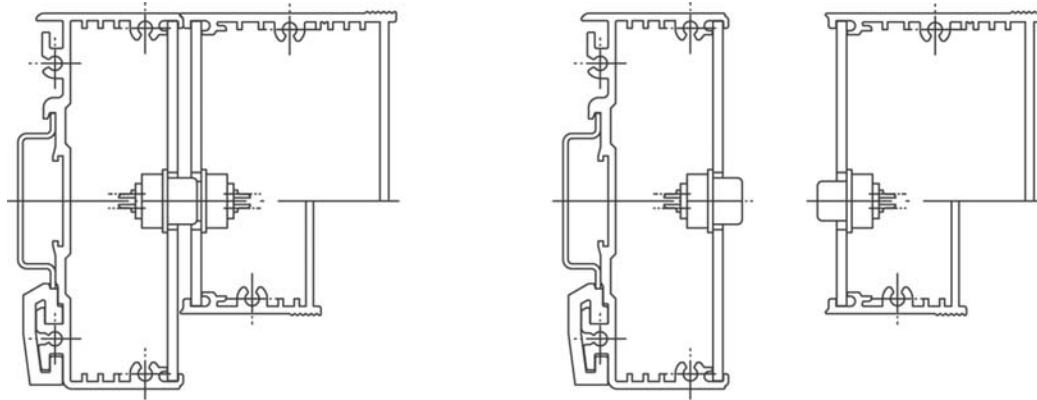
The snap-on device is used to mount the basic profiles onto the DIN rail (35mm) acc. to DIN EN 60715 TH 35 (previously DIN EN 5022). One snap-on device including positioning screw is supplied with profile cap sets AR 75/31 and AR 105/31. Depending on the intended application, the use of an additional snap-on device is necessary. This guarantees optimal support of the enclosure on the DIN rail.



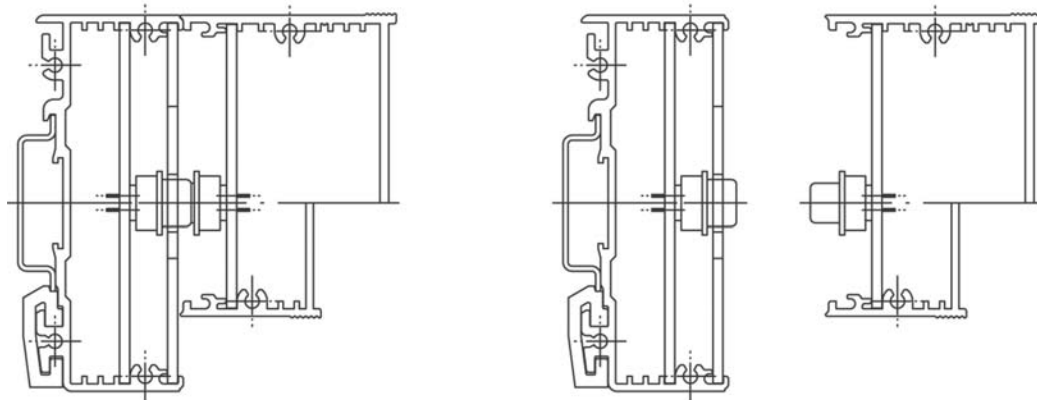


Examples of AluRail Contacting

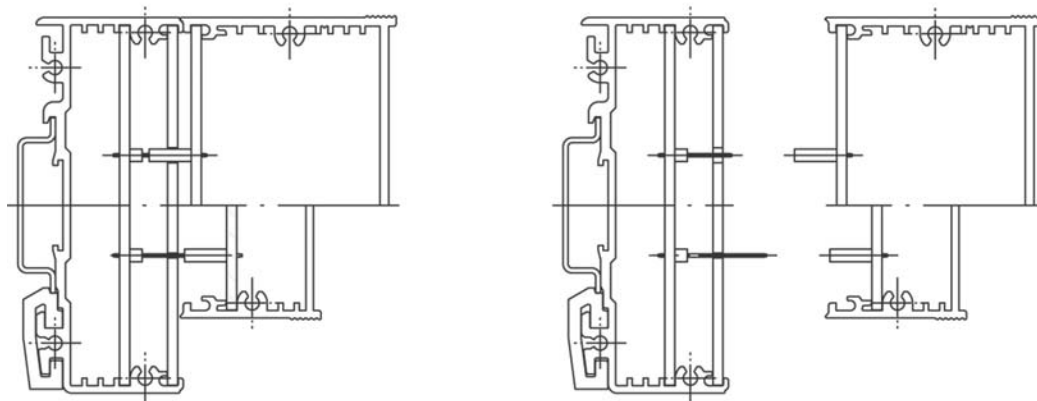
D-SUB connector with solder type (for direct soldering of wire)



D-SUB connector with soldering pins (for soldering the connector/insert into PCB).



Connector strip, pitch 2.54mm (for soldering the connector strip/insert onto the PCB).



Din Rail Mountable Enclosures

Wall Mount Set

Page 14-19

Standard Features

Wall mounting set AR...WB

- AR 52.5 WB/87310525
- AR 70 WB/87310700
- AR 105 WB/87311050
- AR 140 WB/87311400
- AR 175 WB/87311750
- AR 210 WB/87312100
- AR 245 WB/87312450

The wall mounting set is used for direct mounting of the AluRail enclosure on the wall.

