



ROSE+BOPLA
ENCLOSURES

A PHOENIX MECANO COMPANY

**GFK Fiberglass Mini
Cabinet Enclosures
Product Drawings
Last Updated 7/7/2008**



Cabinet Enclosures

The Rose+Bopla GFK Fiberglass Mini Cabinets are made of injection-molded granular GFK fiberglass and are light gray in color. Granular fiberglass is an injectable polyester fiberglass

GFK Fiberglass Mini Cabinets

material made up of plastic pellets reinforced with fiberglass fibers. When injected, this material offers flexibility, reinforced strength and the ability to withstand hostile manufacturing and chemical environments.

Two sizes of GFK cabinets are available in two options: one with a standard opaque door, and one with a double layer safety glass viewing window in the door. They offer a less expensive design choice than our compression-molded fiberglass cabinets.

GFK Fiberglass Mini Cabinets are used for brewery processing controllers, and oil field gas monitor housings, to name a few.

Each cabinet includes a base and lid, stainless steel hinge pins, stainless steel mounting plate inserts and external brackets, neoprene gasket. Alternate glass window versions are available. Screw inserts, locks, handles, keys, mounting plates, and aluminum front plates are optional and must be ordered separately.



GFK Fiberglass Watertight Mini Cabinets 2025 & 2530					
Part #	Length (Inches/mm)	Width (Inches/mm)	Height (Inches/mm)	Weight LBS.	Drawing Page #
21202500	9.84 / 250	7.87 / 200	5.91 / 150	1.98 lbs.	17-271
21253000	11.81 / 300	9.84 / 250	6.69 / 170	3.85 lbs.	17-271
22202500	9.84 / 250	7.87 / 200	5.91 / 150	1.98 lbs.	17-271
22253000	11.81 / 300	9.84 / 250	6.69 / 170	3.85 lbs.	17-271

Note: Dimensions are external. Metric is the primary dimension. Inch conversions are for the user's convenience and are for reference only. Accessories shown on drawing page.

TECHNICAL DATA:

- Color: Light gray, similar to RAL 7032. Special colors on request. Minimum quantity may be required.
- Material: Enclosure—Injection-molded glassfiber reinforced polyester
Gasket—Neoprene
- Ingress Protection: IP65 to EN 60529
NEMA 12
- Temperature range: -67°F up to +194°F
with window: -67°F up to +176°F
- Surface resistance: 4×10^{15} Ohm to DIN 53482
- Flammability: UL 94 VO/self-extinguishing
- Disruptive strength: 26KV/mm to DIN 53481
- Toxicity: Halogen-free



◀ GFK Fiberglass Watertight Cabinet featuring a front plate attached on the inside.



Cabinet Enclosures

2025 / 2530 Mini - Cabinets

Standard Features

2050 / 2530 ABS Mini-Cabinets include: base and lid, stainless steel hinge pins, brass mounting boss inserts, neoprene gasket.

- 21202590 Cabinet with opaque door.
- 21253090 Cabinet with opaque door.
- 22202590 Cabinet with transparent door.
- 22253090 Cabinet with transparent door.

2050 / 2530 GFK Fiberglass Mini-Cabinets

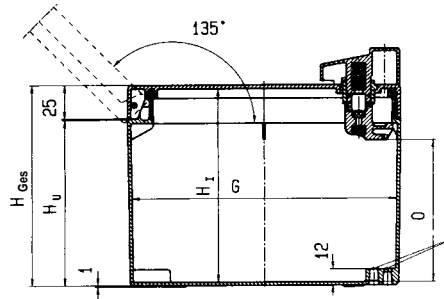
include: base and lid*, stainless steel hinge pins, stainless steel mounting plate inserts, external brackets, and neoprene gaskets.

*Alternate double layer safety glass window.

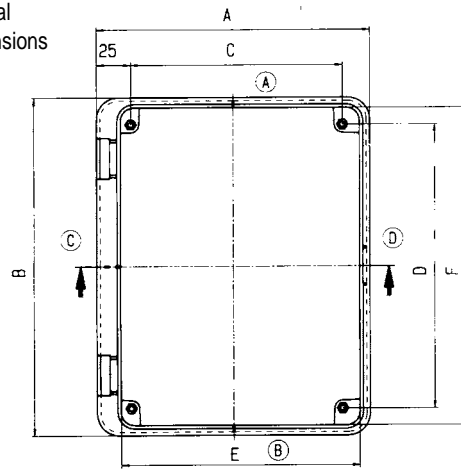
- 21202500 Cabinet with opaque door.
- 21253000 Cabinet with opaque door.
- 22202500 Cabinet features door with glass window.
- 22253000 Cabinet features door with glass window.

Accessories

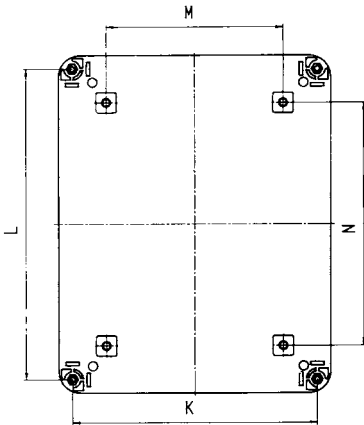
- 21620001 Door handle.
- 21620002 Locking door handle with key.
- 21620003 Flush triangular door lock.
- 21620004 Flush square door lock.
- 10094325 Triangular metal key.
- 10094326 Square metal key.
- 10089040 Internal phenolic mounting plate for 2025.
- 10089041 Internal phenolic mounting plate for 2530.
- 10095320 Aluminum face plate with stud bolts for 2025.
- 10095321 Aluminum face plate with stud bolts for 2530.
- 10052010 Wall mount brackets (set of 4).
- 10051059 Mounting plate screws with washers (set of 4) M5 x 8 mm x .8 pitch.



Internal Dimensions

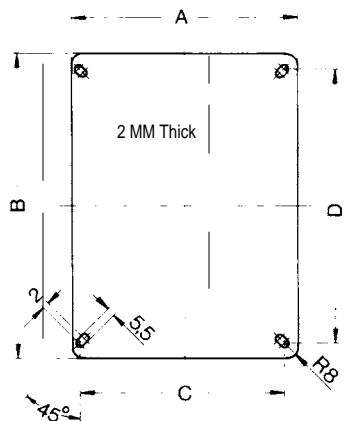


ReacWall



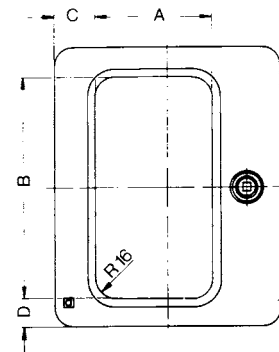
Part #	A	B	C	D	E	F	G	K	L	M	N	O	H ₁	H _u	H _{Ges}
21 / 22202500	199.0	248.5	154	209	174.5	236.5	193.0	179.0	229.2	129.4	179.0	100.1	145	121	149
21 / 22253000	248.5	298.0	204	259	222.5	284.0	242.5	228.1	227.5	179.5	228.8	119.7	165	141	166
21 / 22202590	199.0	248.5	154	209	174.5	236.5	193.0	179.0	229.2	129.4	179.0	100.1	145	121	149
21 / 22253090	248.5	298.0	204	259	222.5	284.0	242.5	228.1	227.5	179.5	228.8	119.7	165	141	166

Mounting Plates
Internal Front Plates



Part #	A	B	C	D
10089040	200	250	155	210
10089041	250	300	205	260

Window - GRP Version



Part #	A	B	C	D
22202500	100	192	38	29
22253000	145	242	43	29

Dimensional Drawings