

HIGH DENSITY CARD EDGE

.050" [1.27] HIGH DENSITY PCI CONNECTOR



SPECIFICATIONS

Material:

Insulator: Polyphenylene Sulfide (PPS), glass-reinforced thermoplastic, rated UL 94V-0

Insulator color: Dark Brown (120 Pos: White)

Contacts: Phosphor Bronze

Plating:

5 µin gold nom. over 50 µin nickel underplate

Electrical:

Operation voltage: 125 VAC max

Current rating: 1 Amps max

Contact resistance: 20 mΩ max

Insulation resistance: 1000 MΩ min @ 500 VDC between adjacent contacts (75°F and 50% R.H.)

Dielectric withstanding voltage: 500 VAC min rms (sea level)

Voltage drop: 30 mV max

Capacitance: 1.5 pF max



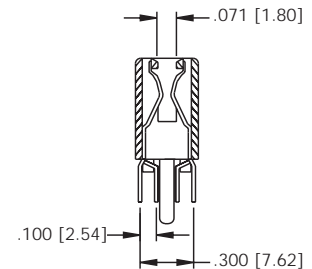
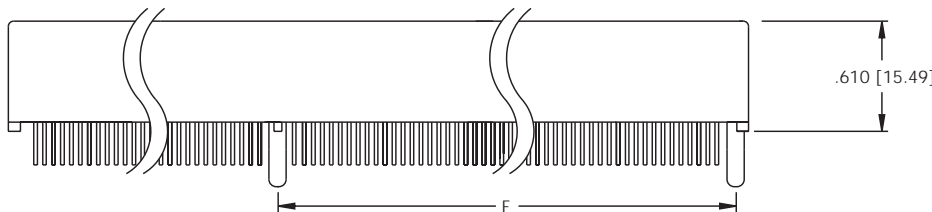
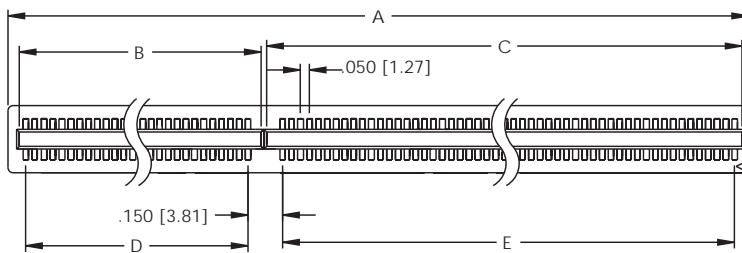
ORDERING INFORMATION

choose one from each category as shown in sample below

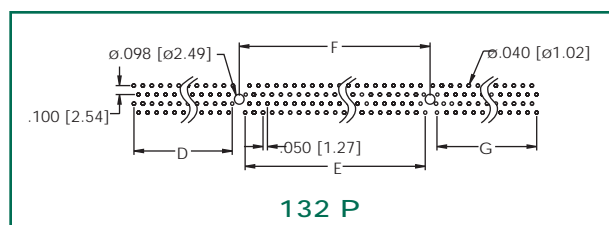
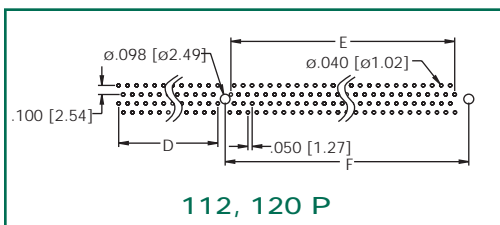
PCI Series	B Peg Type	120 Positions
PCI - .050" Hi-Density Edge Card	A - Plastic pegs B - Metal boardlocks	112, 120, 132, 182, 184, 194



PCI EDGE CARD



PC BOARD LAYOUT



Unit: Inch / mm

Dimensional:

CONTACTS	A	B	C	D	E	F	G
112	3.140 (79.76)	0.625 (15.88)	2.325 (59.06)	0.500 (12.70)	2.200 (55.88)	2.232 (56.69)	—
120	3.340 (84.84)	0.625 (15.88)	2.525 (64.14)	0.500 (12.70)	2.400 (60.96)	2.550 (64.77)	—
132	3.740 (95.00)	0.625 (15.88)	2.925 (74.30)	1.834 (46.60)	2.200 (55.88)	2.350 (59.69)	0.450 (11.43)
182	4.890 (124.21)	2.175 (55.25)	2.525 (64.14)	2.050 (52.07)	2.400 (60.96)	2.550 (64.77)	—
194	5.290 (134.37)	2.175 (55.25)	2.925 (74.30)	2.050 (52.07)	2.200 (55.88)	2.350 (59.69)	0.450 (11.43)